



# **Orientation Handbook**

**1975-76**  
**singapore polytechnic**  
**students' union**

# Contents

	PAGE
MESSAGE FROM F.O.L., CENTRAL	3
OUR UNION	4
- THE UNION AND YOU	6
- THE ADMINISTRATION OF THE UNION	8
- THE STUDENTS' COUNCIL	9
- THE EXECUTIVE COMMITTEE	9
- INTRODUCING, THE 15TH EX-CO	10
- THE STANDING COMMITTEES	11
- THE CONSTITUTION OF THE UNION	14
- THE FINANCE OF THE UNION	14
- THE SPORTS COUNCIL	15
- THE BRASS BAND	16
- WELFARE SERVICES AND YOU	17
THE AFFILIATED SOCIETIES	20
- BUILDING SOCIETY	21
- POLYMER SOCIETY	21
- CIVIL ENGINEERING SOCIETY	22
- CHINESE LANGUAGE SOCIETY	24
- ENGINEERING SOCIETY	25
- DRAUGHTING SOCIETY	27
- PHOTOGRAPHIC SOCIETY	28
- MALAY LANGUAGE SOCIETY	29

## OTHER ORGANISATIONS IN CAMPUS

- BUDDHIST SOCIETY	30
- YOGA MOVEMENT	32
- POLYTECHNIC CHRISTIAN FELLOWSHIP	33
- CATHOLIC STUDENTS SOCIETY	34
- STUDENTS CHRISTIAN MOVEMENT	35

STUDENTS FOR SOCIETY	36
----------------------	----

### THE ANTI-BUS FARE HIKE

CAMPAIGN	40
----------	----

### JOINT SURVEY ON THE AGED

- WHAT IT MEANS TO BE OLD IN S'PORE	46
-------------------------------------	----

THE J.B. SQUATTERS ISSUE	47
--------------------------	----

### BANGLA DESH FLOOD RELIEF

CAMPAIGN	53
----------	----

### RETRENCHMENT RESEARCH

CENTRE	57
--------	----

UNITED WE STAND	61
-----------------	----

THE TRIAL	63
-----------	----

## JUST A SIMPLE MESSAGE...

YOUR JOURNEY THROUGH LIFE HAS BROUGHT YOU HERE WITHIN THE IVORY TOWERS OF THIS COLLEGE. AND YOUR TOMORROW SHINES FORTH WITH THE GLITTER OF GOLD - IT HOLDS THE TREASURES YOU HAD ALWAYS SO EARNESTLY SOUGHT FOR.

BUT TODAY IS THE CRUCIAL MOMENT. TODAY LIES THE KEY THAT UNLOCKS THE PATHWAY LEADING TO A NEW FRONTIER - TO A BETTER TOMORROW. THE CHALLENGES ARE MANY, THE OBSTACLES, THOUGH ARTIFICIAL, MAY PROVE TO BE OUR STUMBLING BLOCKS.

THEREFORE, COME IN SEARCHING AWARENESS; ONLY COURAGE AND COMMITMENT CAN BRING US A TRIUMPHANT VICTORY. LET US STAND IN SOLIDARITY AND BRAVE OURSELVES FOR THAT CONQUEST. LET US HARNESS AND DIRECT ALL OUR YOUTHFUL STAMINA TOWARDS A BETTER TOMORROW - FOR TOMORROW IS OURS.

THE SANDS OF TIME AWAIT NO MORTAL MAN. AND THE PEOPLE AWAITS US WITH OUTSTRETCHED ARMS. SOCIETY TOO HAS PLACED THEIR ASPIRATIONS UPON US. HENCEFORTH, STUDENTS, THE TIME FOR AWAKENING IS NOW. LET US ALL SHOUT OUT IN UNISON - STUDENTS FOR SOCIETY!

**F.O.C., CENTRAL**



*It is a fundamental right and not a privilege for students of a tertiary institution in a truly democratic society to organise themselves in order to advance their rights and fulfil their responsibilities both as students and as members of the society. Students are an integral and important part of society, and as a rule, are more dynamic more open-minded and have less dependants than other segments of society. Therefore they are in a better position to struggle against oppression and injustice and to be in the vanguard of social, economic and political progress of their countries. Singapore Polytechnic students are no exception and it was with the object of fulfilling its responsibilities that the Singapore Polytechnic Students' Union was founded.*



Your Union is known as the  
**"SINGAPORE POLYTECHNIC STUDENTS' UNION"**

The Motto of your Union is:  
**"BERKHIDMAT DENGAN KEAHLIAN"**  
which means  
**STRIVE with SKILL**

Your Union Colours are **RED, WHITE** and **BLACK**.

The Crest of your Union is  
**Symbolic of Progress and Motion through  
Industry and Technology, based upon the  
Spirit and Harmony of Youth of all races  
and creeds.**

The aims of your Union are:—

- (1) To promote and safeguard the interests of the Polytechnic and all members of the Union.
- (2) To advance Social, Cultural, Educational and Sporting activities of all its members.
- (3) To foster among its members a college spirit which shall not have any religious, racial or political bias.
- (4) To afford a recognised means of communication with the Polytechnic authorities, seats of learning, other institutions and the General Public.
- (5) To promote a spirit of unity, citizenship and patriotism.

# the Union and You

## BENEFITS!

Membership of the Students' Union is the compulsory privilege of all Polytechnic Students enjoyed at a fee of \$18 per annum. The Students' Union is a body empowered to represent students in all matters affecting their interests and affords a recognised means of communication with the Polytechnic authorities. The most tangible evidence of the Union's existence would seem to be the various publications, Union House facilities and sports facilities.

Besides this, the Union provides excellent opportunities for gaining experience and for developing one's character and personality. This refers to serving in an official capacity in the Union's administrative machinery. The experience gained is invaluable and stands in good stead in later life. When you are in the Executive Committee, you learn to be diplomatic, rational and objective in your approach to any problem and in your relations with members of the Union and your fellow Union officials. Indeed it is no exaggeration to say that when you work in the Union, you are working in a miniature government.

Though, we are all students with definite course of study we cannot divorce ourselves from our people and because of our education we are in a better position to serve our country and people. The Union, therefore,

organise welfare projects every year, like work camp, charity film show and welfare services. The successful completion of these multifarious activities depends on your unflinching support. By participating in such projects you invoke in yourself a sense of belonging and at the same time contribute your share as a citizen towards the betterment of our people's welfare.

Finally what may also be termed as a benefit is the fact that the Students' Union makes representations to various bodies on behalf of its members. These representations (which take the form of resolutions, press statements or memoranda) are usually made after a thorough and objective consideration by Council of the particular problem.

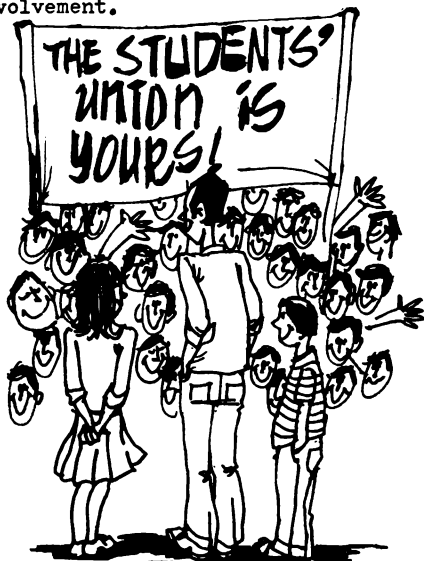
## STUDENT DISCIPLINE!

You are bound to act in a manner consistent with the objectives of the Union's Constitution. The Disciplinary Commission has powers to take disciplinary action, and such action may take the form of fines not exceeding twice the Annual Subscriptions of an Ordinary Member or suspension from any or all the privileges of membership for a period not exceeding one calendar year or suspension from the Polytechnic subject to the approval of the Principal.

...AND FINALLY,



Every year, the Union spends a big sum of money on projects such as the F.O.C., social dances, publications, study tours and students' exchanges etc. This money belongs to you and therefore it is your fundamental privilege to exploit such projects by further participation and involvement.



YOUR RIGHTS & PRIVILEGES



Under the Constitution of Singapore Polytechnic Students' Union, membership entitles you to stand for election, to nominate or second a candidate for election, and to vote in the Union elections subject to the provision of article XIV.

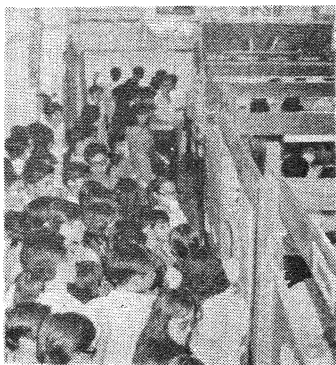
You have the right to speak and vote at General Meetings of the Union. You have the right to use the reading rooms and sports facilities of the Union. You are also entitled (subjected to a small payment when necessary) to a copy of all publications of the Union.

YOUR DUTIES AND RESPONSIBILITIES



A right is coupled with a responsibility. All members of the Union are, therefore, bound to abide by the Constitution and not to act in any way inconsistent with its objective.

Apart from duties imposed by the Constitutions of the Union, it is your duty to attend and support all activities and functions organised by the Union to the best of your ability. Moreover you should in no way behave in a manner which is derogatory to the interests and good name of the Polytechnic and the Union. Furthermore, it is your duty to see that office bearers and officials of the Union carry out their duties in a manner consistent with the objectives of the Constitution.

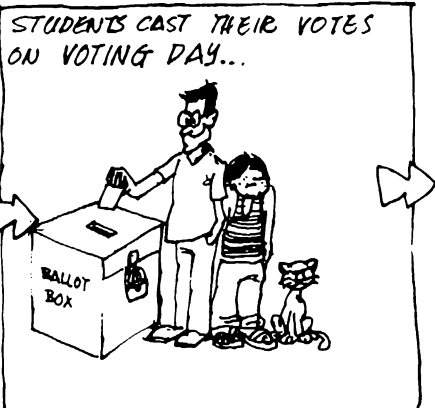
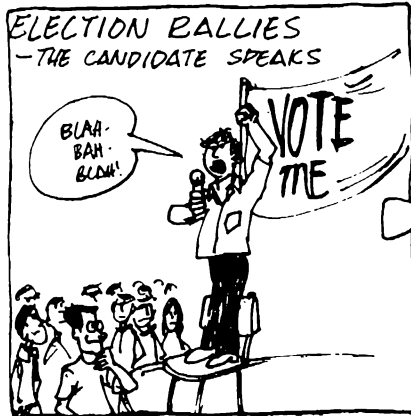
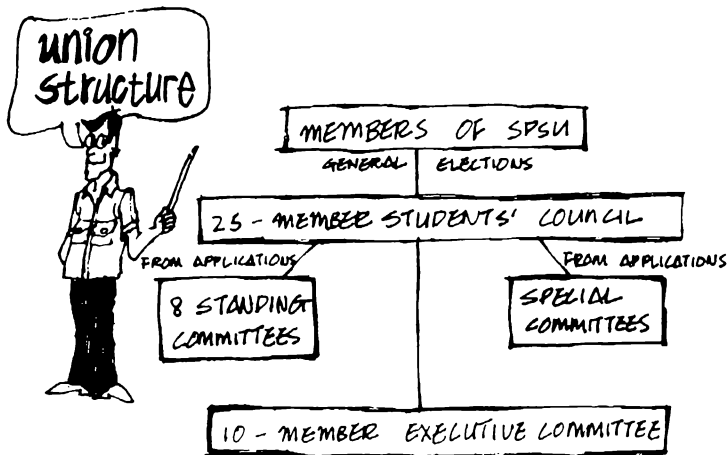


Exhibition on Students' Activities

# the Administration of the Union

The administration of the Union is entirely in the hands of the students, except for staff members in connection with the Finance Committee. The ad-

ministration is vested in the Students' Council, elected annually in the ninth week of the academic year, by the members of the Union. The Executive Committee is elected by the members of the Council from among themselves, and the Standing Committee members are appointed by the Council from applications received from students.



# the Students' Council      the Executive Committee

This is the supreme body of the Students' Union and its twenty-five members are concerned with policy making. All major decisions of the Union are made at Council level. Its policies are executed by officials or other committees which will be described below.

The Students' Council has a Chairman, who can be compared with the Speaker of Parliament, and his duties are to chair all Council and General meetings of the Union. He cannot hold office in the Executive Committee. The Students' Council, at its first meeting will elect from among its members an Executive Committee whose tenure of office will last until the next Annual General Meeting which is convened in the second week of the second academic term.

This committee comprises the President, the Vice-President, the Honorary General Secretary, the Financial Secretary, the Union House Secretary, the Assistant Financial Secretary.

This committee is the live-wire of the Students' Union and an efficient and hardworking Executive is vital for a dynamic Students' Union. The Executive Committee is primarily concerned with the day-to-day administration of the Union. Excepting the President, every Executive official heads an important Standing Committee. It is the recognised means of communication between the Union on the hand, and the Principal, other Polytechnic authorities, the Government, or any other external body, on the other.





Introducing,  
**the 15<sup>th</sup> EX-CO** S.P.S.U.  
**FOREVER!**



Soh Chee Keong,  
 President.



Nelson Neo,  
 Financial Secretary.



James Lee,  
 Publications Sec.



Tan Eng Lock,  
 Vice-President.



Teo Cheng Huat  
 Welfare Secretary.



Patrick Goh,  
 Union House Sec.



Dominic Chang,  
 Social Secretary.



Simon Lim,  
 Hon. Gen. Secretary.



Tan Guan Teck,  
 Asst. Financial Sec.



Wee Seng Chong,  
 Asst. Hon. Gen. Sec.

# THE STANDING COMMITTEES

While policies and ideas are proposed at Council level it is these committees which carry out these proposals. They are of a permanent nature and their powers, duties and structure are provided for in the Constitution. All the Standing Committees are headed by the members of the Executive Committee, and the Council selects, from applications received, ordinary Union members to serve in these committees in different capacities. There are eight Standing Committees.

## FINANCE COMMITTEE

This committee takes sole responsibility over the Union's finance and accounts. It has to submit a financial report of the Union at the end of the term of office of each Council or at any other times when required. It also considers applications for supplementary grants of the affiliates as well as distributing the annual grants to them. The president is ex-officio member of this committee and there is a staff member who countersigns all cheques made out in the name of the Union by the Financial Secretary.

## PUBLICATIONS COMMITTEE

The Publications Committee of the Union is set up to implement the Union's publications policies as laid down in the SPSU Constitution Article IX

Section 3. It handles all publications of the Union besides publishing Newsletters etc. of the Union.

The importance of student journalism need not be emphasised. This committee greatly assists in promoting student unity and enables individuals to understand more fully the common problems encountered by undergraduates.

The major publications produced by the Union are: The Singapore Technocrat, the SPSU Handbook, the Polygon (the Union's annual) and the Union Diary.

## SOCIAL COMMITTEE

The Social Committee undertakes the task of organising all Union dinners, dances, socials, and such other functions and entertainment as directed by the Students' Council.

Hitherto, the Committee has successfully organised the Annual and Graduation Dinners which were well responded by the undergraduate populace and distinguished guests, and have now become a traditional affair.

This Committee also undertakes the screening of entertainment and Educational Documentary films.

# WELFARE COMMITTEE

The interests and well-being of all the members of the Union come under the care and responsibility of the Welfare Committee.

The Committee has been commended for its achievements in being able to negotiate with the Polytechnic authorities whenever any complaints or grievances from the students arise.

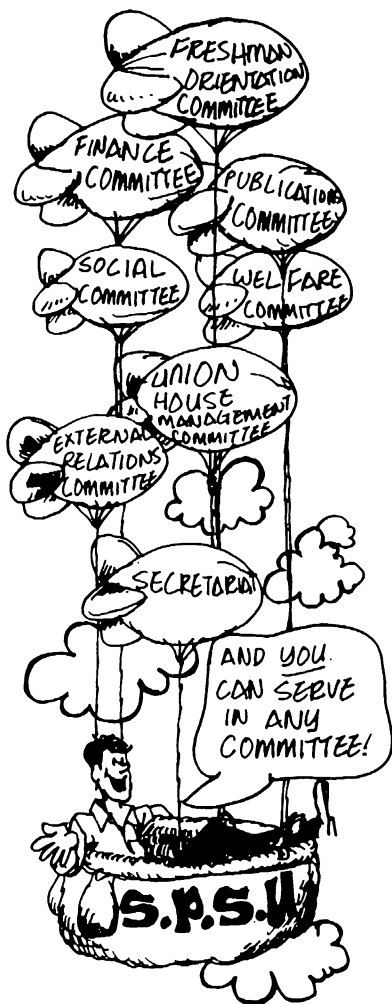
In addition, it has participated in numerous public welfare projects, thus earning the Union a name in the various Welfare Homes in Singapore.

# EXTERNAL RELATIONS COMMITTEE

The External Relations Committee serves as a liaison between our Union and other Students' Unions. It undertakes to maintain communication between our Union and other external bodies all over the world. The ERC has successfully carried out exchange schemes with overseas students. It has also played host to many visiting delegate to our campus.

# SECRETARIAT

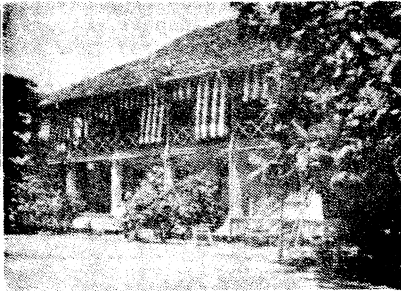
The Secretariat is entrusted with the duty of maintaining the daily routine of the Union Office. His duties include the conducting of correspondence, keeping of all Union's records and the despatching of mails addressed to undergraduates. The Secretariat is situated at the first floor of the Union House. Within it functions the complex machinery of the Students' Union.



# UNION HOUSE MANAGEMENT COMMITTEE

The Committee besides undertaking the daily maintenance and efficient running of the Union House and its facilities also enforces all the rules and regulations as laid down by the Council.

It should be stressed here that the Committee holds a very serious view of students gambling within the premises of the Union House. All offenders will be brought before the Disciplinary Commission.



# FRESHMEN ORIENTATION COMMITTEE

The FOC shall arrange and supervise the organisation of the Orientation Programme, and aid the freshmen in becoming accustomed to the life of Polytechnic. It co-operates with the Polytechnic authorities, the affiliated and non-affiliated bodies in the campus in drawing up the Orientation Programme.

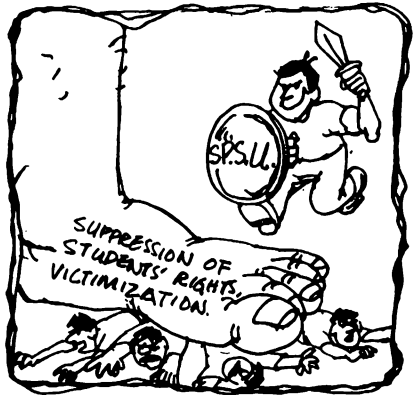
Members of the Union are annually invited to sit in this Committee and its various sub-committees which carry out all the organisation and ensure the smooth running of the Programme.



# SPECIAL COMMITTEES

While Standing Committees have specific tasks allotted to them, sometimes the Council may want to carry out a project or activity for which no standing committee exists. In this case, Special Committees are set up for those particular items, and they cease to exist as soon as their tasks are completed.

The Students' Council also appoints its own representatives to international gatherings or conferences or on any occasion when representatives on the Union are requested.





## The finance of the Union

The multifarious activities of the Union are financed by the following revenues collected:-

The Singapore Polytechnic Students' Union is governed by a written Constitution. The Constitution lays down fundamental principles which no Students' Council can violate or ignore. For example the Union cannot take a partisan stand in favour of any religion or any political ideology.

- i) The Union Subscriptions of \$18 per year for full-time students and \$9 per year for part-time students
- ii) Entrance fees as paid by all new students;
- iii) A nominal grant from the Singapore Polytechnic; and
- iv) Other sources of income as collected from advertisements, dances, etc.

The Constitution itself contains nineteen articles, governing the proper management and conduct of the Union, the structure, powers duties of the Students' Council, Executive Committee and other Committees, and every other matter relating to the structure, function, and working of the Union and to the conduct, welfare etc. of Union members. Under the Constitution all students of the Polytechnic are automatically members of the Students' Union.

The Union's funds are divided into two accounts: The Fixed Deposit Account comprises of money saved as a result of excess of income over expenditure and over the past financial years. The latter is made up of the current revenues.

Without being acquainted with the Constitution it may be quite difficult for you to appreciate the workings of the Union; its aims and objectives; its success and failures; your privileges as members, where it can help you; your duties to the Union, and all other matters pertaining to the Union and your part in it.

## UNION EXPENDITURE

The Union has a Budget for each financial year which lays down the amounts to be spent by each Standing Committee, and for every item of Union activity. The Budget also determines the grants to each affiliated society.

The Budget for the new financial year is considered by the Students' Council at its first meeting. The draft Budget would have been earlier prepared by the Finance Committee of the outgoing Students' Council. After consideration at Council level, the Budget and any amendments to it will be discussed at the Annual General Meeting where it is formally adopted.

HAPPY STUDENTS!



The bulk of the expenditure is on the Standing Committee and the Sports Council, while a large sum goes to affiliated bodies in the forms of grants. This is so because the Union pay particular attention to the recreational facilities for its members.

## BOOK-KEEPING BY THE FINANCE COMMITTEE

All Union's money or money's worth transactions is processed in books of account and are correctly recorded in double entry system by the Finance Committee together with the assistance of a Salaried Accounts Clerk.

The preparation of the Final Accounts, as they are termed, or the Revenue Account and Balance Sheet must be presented by the Finance Committee at the Annual General Meeting.



The Composition :  
President  
Vice-President  
Hon. General Secretary  
Organising Secretary  
Treasurer  
Games Captains

The Singapore Polytechnic Sports Council, sports-wing of the Students' Union, is an autonomous body with full jurisdiction over its activities. It is financed by the Students' Union and governed by an annually elected council consisting of five executive members and captains of various games.

The council, besides being affiliated to the various Sports Associations, is a member of the Quiquangular Committee which consists of students representatives from the five Institutions of Higher Learning, namely the Nanyang University, University of Singapore, Ngee Ann Technical College, Institute of Education and Singapore Polytechnic. The Singapore Technical Institute was also invited into the Committee. This Committee is formed to promote goodwill and friendship among sportsmen of various institutions. It agrees upon the fixes a games calendar for the year and appoints an institution to organise one or more of the activities.

The Council takes this opportunity in inviting all those Freshmen and Freshettes who are good athletes to participate in this meet. Only your enthusiasm and keen interest in this meet can help to boost the strength of our team.

With the exception of a few items, the Council caters for practically all popular and sesonable forms of sporting activities and organises various games championships and tournaments either on an inter-society or inter-departmental basis each year.

Though many of our sportsmen brought individual glories each year it is believed that any fame or glory cannot be complete unless all the students participate. It is therefore, our fervent hope that students will make use of such available opportunities and facilities as well train them to become balanced matured citizens. We hope that the ladies too, will show a keen interest.

The Council takes this opportunity in wishing all graduating sportsmen the best of luck in all their undertakings and invite freshmen into the sporting arena of the Singapore Polytechnic.





## EQUIPMENTS AND UNIFORMS

At present there are 40 pieces of brass instruments stored in the Band room. Recently plans are being made to add a saxophone-family.

Firstly, we would like to wish you a pleasant stay in the Polytechnic.

The Singapore Polytechnic Brass Band had been in existence since the 1971/1972 session and has made tremendous progress through the years. The Administration and the Student's Union both share their expenses in the running of the Band and their support had been most encouraging.

## BAND COMMITTEE

An organising committee is elected each new session. The following forms the committee of the 1974/1975 session.

Tan Chye Heng	Chairman
Tay Chee Khiam	Secretary
Cheng Eng Waye	Quarter-master
Tan Ai Kun (Miss)	Treasurer
Kang King Tueng	Librarian
Wong Yew Hon	Publication Sec.

The Instructors for the band are Mr. Teo Khye Beng (from E.C.A.) and Mr. Ho Hwee Long (from Institute of Education). Other than making decisions and policies for the Band, the committee also organise barbeques, kelong trips and other social outings to encourage warm fellowship among members.

## FUNCTIONS OF THE BAND

This year the Band made two major public performances during Dec. The first was at National Theatre and The other at the Macritchie Reservoir and both performances were highly commended by the public. The Band was also in attendance for numerous domestic functions like F.O.C. 74/75, Foundation Stone Laying Ceremony of Dover Campus.

An efficient music library is maintained consisting of jazz music, pop songs, classics, Latin American music and many other realms of music. The scores are on loan to members only. The Band outfit is primary a badge-coloured coat and dark black pants for men. The coat is partly subsidized by the Administration (50%) the Students' Union (25%) and the rest paid by the individual member. The coat belongs to the members on completion of his services to the Band.

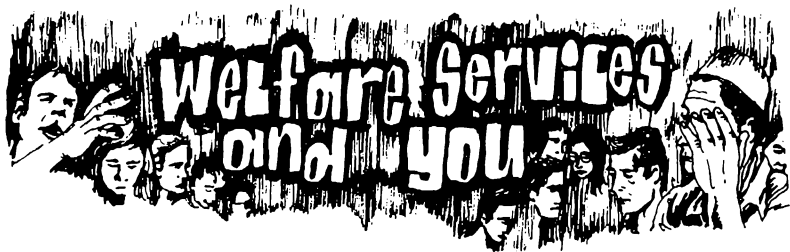
## MEMBERSHIP

When the Band made its debut it was an all-man Band. But the Women's Liberation had made its way into the band now we have 6 ladies and 31 men in our Band. Our members come from mostly full time courses and part-time student are always welcomed. This current year, a special, committee, Band Recruitment committee has been set up to cater for enrolment of new members and band publicity during this FOC '75/'76.

## CONCLUSION

The future progress of the Band lies entirely in the hands of her members, especially the new ones who have enrolled into the Polytechnic.

Your enthusiasm and co-operation will contribute to mould the band into one of the finest band in land in which the Polytechnic can be proud of.



Caring for one another is an obligation to our community. This includes the caring for the less fortunate and rehabilitating them into our society. As human beings and students of institutions of higher learning, we should care for one another. However, how many of us can firmly stand up and truly say that he or she sincerely cares for others, even the less fortunate and underprivileged one?

If you are the one who says or feels that you can, we would be very glad to have you in our Welfare Services Committee.

The Welfare Services Committee was officially formed as a subcommittee of the Singapore Polytechnic Students' Union Welfare Committee during the 11th Council. Initially our aim is to inculcate a sense of community welfare awareness

and involvement among our students and society. Our next target is to co-ordinate and assist other Welfare Organisations in the development of Welfare Services in our Republic.

After glancing through the aims briefly you may ask, "How can I, one who is facing so many problems of my own, be part of this committee?" The answer is yes, you can, and you are most welcome. Once you become a part of us, you are free to join or participate in any of our projects or functions.

### *our weekly projects*

You can contribute in community Welfare by participating in our weekly projects by giving tuition or recreational activities to children from various Homes or Centres. The Homes or Centres under this scheme are :-

- 1) Singapore Children's Society

Giving tuition to the children...

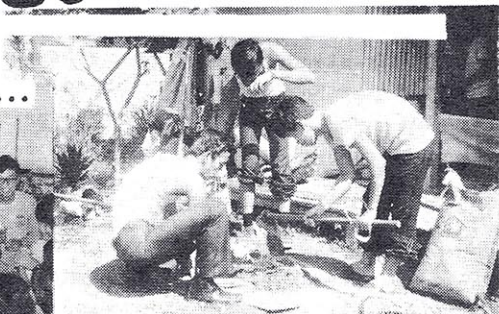


Christmas carolling to cheer up the old folks...



# A PEER AT OUR WELFARE SERVICES...

Getting to know each other...



And of course, a time for enjoyment...

A talk on community services...



- a) Toa Payoh Branch
- b) Everton Park Branch
- 2) Bukit Ho Swee Community Centre.
- 3) Convent of the Holy Infant Jesus, Bukit Timah (Sat. noon).

The tuition ranges from primary to secondary levels. Subjects include those taught in daily classes. The recreational activities consists of outings and picnics. The main aim of this scheme is not just to give free tuition but also to provide care, friendship and love which the children are deprived of.

If you are of the more patient type, you can also sign up as a volunteer at Tampines Home. Tampines Home is a home for the retarded. Every Saturday noon, we bring the inmates to the Tanah Merak Beach. Whereby we bring them joy and friendship and to guide and help them in every possible way.

### OUR MONTHLY PROJECTS

This scheme includes projects like picnics, excursions, odd-jobs and other festive celebrations for both the retarded and underprivileged. These projects are carried out monthly. If your time schedule is

too tight and you are unable to devote full commitment to the cause of community Welfare then this project should be suitable.

### CONCLUSION

The Welfare Services Committee is not just another Welfare organisation. It is infact more than an organisation. The moment you step into our committee, you will find that instead of meeting volunteers, you will be meeting "brothers and sisters". The common aim of helping others through welfare services had bonded us up into one big family. We share our experiences and problems together.

If you like to know more about our Welfare Services Committee, do come along and join the forthcoming "Welfo" - the Welfare Services project in the Freshmen Orientation or contact any of our volunteers. We will only be too glad to meet you.



# *The Affiliated Societies*

*The Students' Union has eleven Affiliates. These are the seven academic societies and the four other non-academic societies. On affiliation to the Union, these smaller bodies receive funds and occasionally grants and subsidies to run their activities. The sum involved depends upon the significance and contribution of individual projects organised by the affiliates towards the Polytechnic as a whole.*

*Every affiliated Society is fully autonomous with jurisdiction over its constitution, administration and activities. However, should an affiliated body act in a manner contravening the Union's objects and constitution, it is liable that its financial aid be withdrawn and its affiliation revoked.*

*All ordinary members of the Union are entitled to become members of any non-academic affiliated body but students of other academic departments can only become associate-members of an academic affiliated society which is not representing their department of studies. With the exception from the Engineering Society whose full membership is open to all full-time students.*

*In the following pages, you will be introduced to a collection of societies catering for a diversity of interests. A student is bound to find some societies which cater for his interests and which he is happy to go along with.*



THE SINGAPORE  
POLYTECHNIC

# BUILDING SOCIETY

The SINGAPORE POLYTECHNIC BUILDING SOCIETY would like to take this opportunity to extend her heartiest congratulations and warmest welcome to you on your successful admission to this reputed tertiary institution.

The Singapore Polytechnic Building Society, a consanguin of the Singapore Polytechnic Students' Union divulge her membership to all full-time and part-time Building Students.

To live up with the aims and objectives of the Society, various annual functions and activities, such as, sports, annual dinner, barbeque and other healthy activities are organised to the interest of the members.

In addition, screening of documental films as well as excursion to various construction sites which are hand in hand with the building course had also been organised.

Yet, the Building Society has been reputed for producing an annual Journal of high standard with circulation extended to local industries and all over the world.

Above all that, the Society confers Annual Gold Medal Awards to members who excell in their academic performance as well as Extra Mural Activities. Certificates of merits were also awarded to members who had

unselfishly contributed their services with utmost loyalty to upbring the name of the society.

Finally, it is our sincere hope that you, as new members of the society will with undying efforts and ever-glowing spirit project the very name of YOUR SOCIETY to greater height of achievements. We wish you all a successful and memorable stay in the Singapore Polytechnic.



Annual Dinner & Dance



THE SINGAPORE  
POLYTECHNIC

# POLYMER SOCIETY

The Polymer Society extends its warmest welcome to all new students on their successful admission to their tertiary institution and may your stay be a pleasant and fruitful one.

The Society was established on the 14th July, 1967 to look into the interests of its members who are mainly the students of the CHEMICAL PROCESS DIVISION. All students of this Division are automatically members of the Society and Associate membership



is open to all other students of the Polytechnic, with graduates of the division being eligible for graduate membership.

although it has a small membership of about two hundred, the Society manage to cater for the interests of its members. Activities like Games Festival, Buffet Dinner, Holiday Camp and others were organised annually by the Society to promote better relationship and communication between fellow students. To acquaint the members clearer picture of the local industries, factory tours are organised, the success being due to co-operation of the local factories. Film shows, both entertaining and educational, are often screened free to members.

At the Annual General Meeting of the Society, all members are encouraged to stand for election for the various posts within the Executive Committee and the sub-committees. This would therefore provide a ground for nurturing and developing the potential qualities of new members.

To keep members informed of the Society's activities and to provide a general reading, the bi-monthly bi-lingual bulletin called "D' Cpt'ian " is published. In it, members display their literacy talents and voice their opinions on various topic of interest. The 'POLYMER JOURNAL' an annual publication of the Society is Strictly a technical one. It contains articles contributed by eminent technologists from all over the world, working in the field of Polymer Technology, Food Technology and Chemical Engineering. The production of this reputed journal has helped immensely in stimulating new concepts and theories in the scope of Chemical Technology.

The Society annually awards prizes to members whom the selection committee consider most deserving in both academically and extra curricular activities.

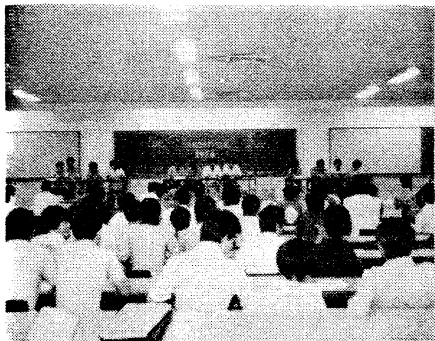
In conclusion, the society hope very much that new members will contribute actively to the Society activities and help to maintain and improve on the good image it has in the Polytechnic and the local industries. Once again we wish everyone a successful and enjoyable stay in SINGAPORE POLYTECHNIC.



THE SINGAPORE  
POLYTECHNIC  
**CIVIL  
ENGINEERING  
SOCIETY**

The Singapore Polytechnic Civil Engineering Society was "declared independent" from the Singapore Polytechnic Engineering Society on November, 1971 and is currently entering into the fifth year of her existence.

We extend our heartiest welcome to each and every new student into the Polytechnic and we take this grand opportunity not only in wishing you a fruitful & memorable stay at Polytechnic but also in introducing this unique, young Society to you which is the only one of her kind in the Republic. As Civil Engineering is one of the specialised branches of engineering, it is our reluctance to clarify that



Civil Engineering Quiz 1974

membership for our Society is confined only to Civil Engineering students.

The primary objectives of the Society are :

- (1) to promote better understanding cum develop deeper interest in the studies of Civil Engineering,
- (2) to promote social, sporting activities among members and with members of other Societies,
- (3) to produce relevant publications for the benefits of members.

As the Society is relatively young, much effort is put in continuously to improve and stabilise the establishment. This is manifested by the Constitution Review and Amendment which sparked off the 4th Administrative Council. With overwhelming support from the members, the structure of the Administrative Council was slightly altered and currently comprises of eight Honorary Councillors elected into office by members during the Annual General Meeting.

To promote deeper interest in Civil Engineering, the

Education Bureau led by the Education Secretary had successfully held a grand "Civil Engineering Quiz 1974". Various excursions to industrial establishments relating to Civil Engineering were organised enabling members to get an insight view of actual work and realise how confined their knowledge would be by just attending lecture and pass the examination. Documentary films were also screened.

Our Annual Dance "Gran Nite '74" organised by the Social and Welfare Secretary as well as the Sports Festival were aimed at promoting closer staff-student relationship, relieving of stresses induced from academic work and creating of sportmanship. Besides, entertaining films were screened, a tea-party was held, Society Tee-shirts printed, recreational equipment purchased and maintained for members' use



CES tea-party

"Civil Voice" produced by the Publication Committee kept the members informed of the Society's activities, simultaneously created writing capability among members.

To the new students who are enrolled into Common First Year Course and wished to clarify any doubts about Civil Engineering Course, we are most prepared to offer assistance in whatever way we can. Please see us at the F.O.C.'s "Society Corner" or drop a line to the Society.

We look forward to serve more Civil Engineering students. To our new members, we are waiting to see your active participation.



The Choir, Chinese Instrumental, Harmonica, Dance and Drama groups of the Cultural Sub-committee hold regular practices for the members. Beginners' classes are usually set up during the first term of each session to aid new members in acquiring the skill of handling instruments. Since 1970, our cultural sub-groups have been staging various cultural shows to the public at the Cultural Centre, Victoria Theatre and the National Theatre. Overwhelming support from the public have always boosted our spirit sky high. The members participated enthusiastically in these shows and last year, the number of participants increased to about two hundred.

The Recreational sub-committee caters for the building up of physique of the members. Regular practices are held in the week-ends. Matches are played against other fraternal student bodies. These matches include the Inter-Society Invitational Friendship Tournament and the Inter- Varsity Basketball Tournament. "Friendship First, Competition Second" has been the motto of our sports activities. Besides sports, the committee also organises other recreations

---



# THE Chinese Language SOCIETY

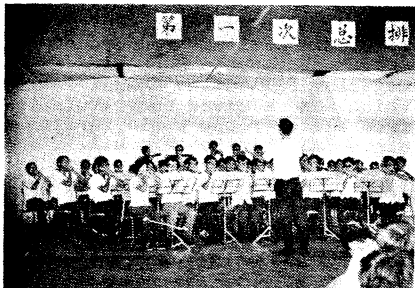
The Society extends her warmest welcome to all fellow students who have successfully gained admission into the Singapore Polytechnic. The Chinese Language Society is a registered organisation affiliated to the Students' Union. Through the enthusiasm and group effort of her members, the society grows throughout the fourteen years of existence and is now one of the most active societies in the Polytechnic.

The society comprises of cultural, recreational, publication, academic, and co-ordinating sub-committee which often organises activities of the students' interest.

for the members to spend the otherwise long monotonous vacations. Holiday camps have always reminded us of those happy times when we stayed together in the big family. Hiking is also a favourite. This has been proved to be so during the hike round the Macritche Reservoir last year. Although exhausted after completing the course, everybody was cheerful and another memorable day was spent.

"Yee Shin", our monthly bulletin, not only keeps the members inform of the society's progress but also discusses current affairs. Our English publication "The Scope" caters for our members from the English stream and also serves mainly as a link between the society and other students of the Polytechnic. The society also produces "Yee Chow"-- our annual journal.

The Academic sub-committee organises technical drawing class to assist fellow students who encounter difficulties in this subject. There is also a Chinese Language class to cater for those who wish to learn the language. Study groups are also formed in preparation for examinations.



As the students are scattered in the three campuses, efficient co-ordination deems necessary. The Co-ordinating committee was formed to organise activities to foster better relationship among fellow members.

Finally, it is our hope to have you joining us and we shall work and learn together in this big family -- The C.L.S.



THE  
SINGAPORE  
POLYTECHNIC

# ENGINEERING SOCIETY

We in THE SINGAPORE POLYTECHNIC ENGINEERING SOCIETY extend our heartiest congratulations and warmest welcome to you on your successful admission to this reputed tertiary institution. Your admittance into this institution of higher learning proudly reflects a great leap forward in your academic pursuits and affords to you a challenge whereby you will eventually equip yourself with technical and scientific knowledge, training and skills which will be demanded of you for a more positive contribution to our society.

We sincerely hope that you will allow us to assist you in developing your potentials and talents by enrolling as a member in our Engineering Society and taking full advantage of activities and opportunities offered so that your aspirations in life may also be realised.

Inaugurated in October, 1959, the Singapore Polytechnic Engineering Society had developed from the visions of our pioneer founders to what is today the most well-established affiliated academic society of the Students' Union. It was with the aims of fostering interests, encouraging participation and promoting the knowledge of today advanced technology in the field of engineering, that the Engineering Society was formed.

There are four categories of membership

- 1) Full membership - for full-time Engineering students.
- 2) Associate membership - for part-time Engineering students.
- 3) Graduate membership - for graduates.
- 4) Honorary membership - confer by the executive committee.

The administration and welfare of the Society is properly maintained by an elected executive committee of eleven members. The Society functions effectively through active participation and contribution by its members through many of her various sub-committees.

Hitherto, the Society has been organising activities encompassing the realm of education, social and recreational functions, and publications.

Workshop discussions, forums and seminars are held during the session. Lectures are given by prominent figures and specialists in their relevant field of work. Documentary and entertainment films are shown free to members. Tutorial classes, excursions to industries, leadership training programme, holiday camp, social gatherings, dinners, educational and goodwill tours to other countries, cyclostyling of past year examination papers and many other activities are also organised.

Our sporting activities include the Inter-Year Games, Annual Games Festival followed by the Inter-varsity college Engineering Societies Games (ENGSOC Games) initiated by our Society in 1972. The participants in this Games are our fellow members of Engineering Societies in the University of Singapore and the Ngee Ann Technical College. This will surely provide our members a vast opportunity to show their proficiency and team spirit in games.

For the practical and creative minded members, we have the Hobby Club which encompassed Aeromodelling Radio and Electronics, Motor Vehicle Maintenance PEC Model, Banana Boat Project, Hover craft and Graphics Design sections, where on-the-spot theory and practical application could be imparted.

To keep members informed of the Society's activities and Project, the latest developments in the Polytechnic and in the fields of engineering, monthly bulletin called 'ENGSOC Times' are published. For those interested in essay writing and student journalism the Annual Essay Write-in gives you the ground for your contributions, and the best student contributor will be offered the 14th EXCO challenge Trophy. Furthermore, the Society produces a universal reputed annual magazine called the Annual Journal which has received congratulations from all over the world for its contents. This Society will be publishing its 12th volume by October and will prove as an invaluable gift to all our members

Above all, the Society also confers Annual Awards to outstanding members who have shown positive contributions toward

the progress of the Society. The Awards are as follows:  
D.A.J. Bruford Statuette  
Tan Soo Yang Trophy  
Singapore Polytechnic  
Engineering Society Award  
together with Certificates of Distinction and Participation.

It is our sincere desire that you, as new members of the Society will with instinctive efforts and ever-growing spirit, project the prestige image of the Singapore Polytechnic Engineering Society. How well we could achieve yet another year of success depends on your loyal and unstinted support.

Finally, on behalf of the SPES we wish you a fruitful stay in Polytechnic.



THE SINGAPORE  
POLYTECHNIC  
**DRAUGHTING  
SOCIETY**

The Draughting Society, since its birth 4 years ago had grown considerably familiar to the rift-raft manner of life. A fifth year is approaching and we can proudly voice our elated feelings and pride in the achievements and defeats which we were able to face and survive and rejoice till now.

The past year or session however saw the materialisation of certain dreams and hopes not the mention our motive of creating a cohesive society as should be in every small society. These such functions as a tea-party to hail the formation and appoin-

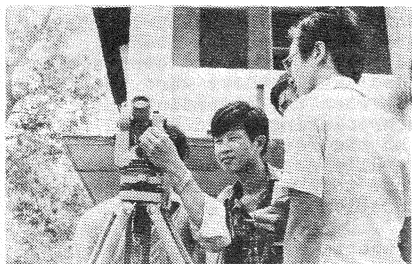
tment of the 4th Ex-co. The session passed generally smoothly, there times when the leaders were really proud and even 'swell headed' while there were yet times when the demanding and unappreciating world seemed to crush the society to pieces but naturally nothing of the like nature took place, thanks to the dedication of the Ex-co.

The sports section organised games and competitions between the respective classes and too between seniors and 1st years not to mention matches with other departments and colleges where prizes and souvenirs were presented in appreciation. Social outings for example excursions to places of interests in Singapore as well as the ever formal and proud excursion of the Draughting Dinner at Ming Court where the deserving recipients of the Medals and Cents. of Merit did Justice to the Society

One may conceive the idea up to this point that the Society is concerned only in the interests of herself and her members; well let me enlighten you that the Society supported the courageous and unselfish motives of the Union most fully, participating in every humanitarian protest and action, such as the Tasek Utara Issue, the Imprisonment brought upon Tan Wah Piow and others just to name a few.

The Publication department saw the advent and production of the Society Newsletter the 'Architad' to which much planning, research and particularly sweat, tears late nights and lots of fun were experienced (and of course, joy). This production however lifted the confidence and strength of the Society from the depths of a sea of inferiority complain and sadness the cause of which





Surveying - on the field



# THE SINGAPORE POLYTECHNIC PHOTOGRAPHIC SOCIETY

The Singapore Polytechnic Photographic Society for fifteen years, has earned a reputation of affiliation to the Singapore Polytechnic Students' Union and the Singapore Photographic Society.

Generally, the aims of the Society are:-

was the spiteful atmosphere between the society and the printer of the journal 'Technographics III' which we are momentarily getting our backs too.

All in all, the society will always live and grow stronger and wiser with each passing year and one can just utter nothing but words of love and pride in the society as well as her members who have in every way given their unfailing support and encouragement to those they have elected into office for the concern of the society and those in the Polytechnic.

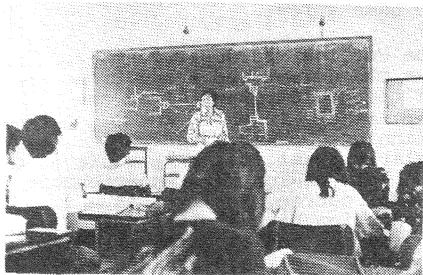
- a) To promote photographic interests to all its members:-
  - i) to organise excursions, talks and film show and to help members in learning the art of photography,
  - ii) to establish a scheme of loaning photographic literature and equipments to all its members
  - iii) to organise exhibitions and competitions in its course of promoting photography.

b) To be in communication with external bodies of similar nature;

c) To provide voluntary service in matters relating to the field of photography.

Annually, the Society is organising its Students' International Photographic Salon in which students can expose its talent of photography. Courses, talks and outdoor shooting session are been organised to upgrade the standard of photography.

The Society's publications include the 'EXPOSED' and Exhibition Catalogue which are provided free to all members. The library consists of interesting literature which are loaned to all her members.



In the class

Equipments like flash guns, cameras and the usage of the dark rooms over the Prince Edward Campus and the Ayer Rajah Campus are catered for to all its members.

The life and the future of the Society depends on you, the new students who are going to be tomorrow's and executive committee members. The Society welcomes you to the Polytechnic and wishes you every success in your study.

---

## THE MALAY LANGUAGE SOCIETY

Her birth was marked on the 22nd June 1973 when membership was opened to all Polytechnicians. Coincidentally, only the Malays display their sincere concern for her idealism, such that she was manipulated to be an exclusive representation of that community within the campus.

Up to date she has a modest 150 odd active members. Incidentally the aims of the society, constitutionally, are ; to promote interest in the Malay language and Malay culture, to encourage participation in educational, social and sporting activities organised by the society and the Union and lastly, to afford a recognised means of communication with associated bodies and the general public.

Intercampus quiz was organised, aimed primarily at integrating the members from the various campuses. Four teams participated. To provide information on matters pertaining to

the Poly, talks were organised to encourage the students to proceed to technical institution; and to establish communication media between students from secondary schools and the Polytechnic. We were warmly supported by the visited schools being Tun Sri Lanang, Maju, UST, Buona Vista and YISS.

A folk dancing class was also conducted. Efforts of this class was a folk dancing performance on the annual "Perjumpaan Hari Raya". A tuition class had been opened at Still Road, major purpose of which was to guide the secondary 3 and 4 students in their studies in the hope that this will enable them to enter the Polytechnic later.

The construction of a ditch, a water tank were the major undertaking of the society at work camp at Lorong Kikir. Finally our hearty congratulations to you freshmen with hopes that you have a worthy stay in the Polytechnic.

---

DON'T BE A BOOK-WORM

Educate yourself thru'  
INVOLVEMENT & PARTICIPATION!



# Other Organisations in Campus

## SINGAPORE POLYTECHNIC BUDDHIST SOCIETY

( The gift of truth excels  
all other gifts)

The non-aggressive, moral and philosophical system expounds no dogmatic creeds, encourages no superstitious rites and ceremonies, but advocates a golden mean that guides a disciple through pure living and pure thinking to the gain of supreme wisdom and deliverance from all evil, is called the Dhamma and is popularly known as Buddhism.

The most Enlightening and Compassionate Buddha has passed away some 2598 years ago, but the sublime Dhamma which He unreservedly bequeathed to humanity still exists in its pristine purity, admirably serving the concept of the Republic of Singapore's rugged multi-religious and multi-racial society through a spirit of understanding, tolerance, patience and loving-kindness.

Buddhism is also known as "The Middle Way", Righteous Way of life, ethical-philosophical system and a religion of freedom and reason". It teaches Mankind to do three main basic things :-

"DO GOOD, AVOID EVIL AND  
PURIFY THE MIND"



Bar-be-que

Simple though it may sound but difficult it is to practise. The moral conduct of the people plays a most important part in the religion. The Great Teacher once said, "My teaching is not to come and believe but to come, see and practise". It encourages people to study its teaching fully and so allow them to use their own judgement to decide whether they should accept the teachings or otherwise. No one is asked to come and embrace this religion without having an understanding. It recognises that there is a timeless quality in one's respect for facts, the power of reason, the quest for truth, the importance of moral reason, the freedom which comes from self discipline and the dignity and worth of the individual.

Realising its unique importance and meaningfulness to life, the Singapore Polytechnic Buddhist Society was given life in 1966, to propagate the Buddha

**Dhamma**, to serve as a centre for Buddhist Youths to meet, to discuss related matter and finally to maintain a constant tie with external Buddhist Societies and Groups. It is hoped that the atmosphere of calm and spirituality will help students to counteract the tiring rat-race of paper-chasing that exists in the Polytechnic. Buddhism is a living religion - a living testimony to the truth of life - therefore every Polytechnic student is encouraged to join the Society whether he/she is a Buddhist or otherwise.

The Society is now in its 9th Year of existence and members comprising the 9th Council are as follows :-

**Mr. Simon Soh** -- Chairman  
**Mr. Roddy Lim** -- Vice-chairman  
**Miss Yeo Hwee Khing** -- Hon. Gen. Secretary  
**Miss Lim Chwee Peng** -- Assist. Gen. Secretary  
**Miss Lim Siew Hiok** -- Hon. Treasurer  
**Mr. Teo Boon Choon** -- Organising Secretary  
**Mr. Thomas Lee** -- Publication Secretary  
**Mr. Looi Kok Choong** -- Committee member  
**Mr. Chiang Tuck Cheong** -- Committee member  
**Mr. Ng Ngot Puay** -- Student Auditor

Regular talks had been held during lunch-time hours at the Polytechnic Campuses by prominent speakers and students were encouraged to discuss freely to clear any doubts during these talks. "THE LOTUS", the official newsletter of the Society has also helped to profound the Buddha Dhamma, for the good of the many and for the welfare of the many, as well as enabling members to voice their opinions or contribute articles of interest. Dhamma discussion and

Meditation classes are held weekly so that members can acquire a wider capacity and deeper realisation of the Mind. Religious Forum, an annual affair of the Society, has been organised to instill an atmosphere of understanding and friendship among the various religious societies existing in the Polytechnic. We believe in living in harmony with all beings as taught by the Buddha.

In addition, members have enjoyed the friendly atmosphere they have had with members of external Buddhist Organisations during a series of functions which we organised or were invited. Such functions include Temple Tour, Bar-Be-Que Night, Weekend Picnic, Lunch cum Tea Gatherings, Welfare Project, etc.

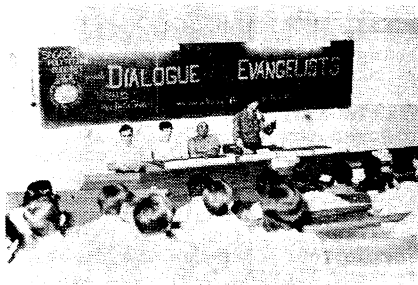
To instill a sense of National Day Forum cum Cultural Show was held at the Cultural Centre. Vesak Day is always a day of joy and remembrance of the Great Teacher to all Buddhists, and we shall be celebrating this auspicious day by having a Vesak Prelude at the Victoria Theatre.

Other past activities of the Society includes Educational Tour (to Thailand), Holiday Camp, Children's Party and Fund Raising Project (Sales of Letter Pads and Envelopes, Film Shows, etc.)

The Buddhist Society invites you to experience the climate of freedom and reason within the norms of spirituality. It is a challenge, in this chaotic world, to enter into the unknowns, to search for the meaning of life, to discover the truth of life. We welcome you to join us in our quest for the truth. The doors to membership of our Society is opened to all students who are interested, irrespective of

class, race or religion. Let us enjoy being together in all activities of the Society and at the same time learn the art of living without being fooled by the things we learned.

Mav all beings be well and Protected.



Forum held by the Society

## SINGAPORE POLYTECHNIC **YOGA** **MOVEMENT**

The Singapore Polytechnic Yoga Movement originated its history in Singapore Polytechnic about 3 years ago and was initiated by several of our potentials members from the Ananda Marga Yoga Society of Singapore, which has its headquarter in India.

Yoga is one of the oldest science practise, for the maintenance of a healthy body but regretfully in ancient times, it was only practised by a few selected disciples and result in a teacher (or guru) and disciple relationship, but in this era, Yoga is slowly gaining popularly amongst both the young and the old.

Yoga take care of the three vital aspect in life - physical, mental and spiritual. Only with the harmony of these three bodies that men can lead a peaceful and harmonious life. In this ever advancing and competitive society of today, to be able to completely relax and rid of all the accumulated tension seems to be pretty difficult for some people.

The physical mechanism of ours is constantly functioning and yogic postures ( or Asanas in Sanskrit) done at regular session can effectively calm down the body and re-energize the body, making it more efficient and less prone to disease.

The mental body needs a form of concentration, while the spiritual body needs its spiritual food i.e. meditation.

S.P.Y.M. in conjunction with the headquarter, offer a systematic and yet simple approach to the practice of Yoga. Membership is open to both staff and students in the 3 campuses.

Classes in Asanas (yogic posture) meditation and lecturers on Yoga Philosophy are conducted at a regular basis.

The Archanya (spiritual teacher) will be conducting a Diarmachakra (group meditation) weekly in the evening and Sunday mornings, following by a short lecture on Yoga Philosophy. Members are advised to attend so as to have a better understanding of their practices. Professional guidance will be given the Archarya, as they will initiated the ready members and constantly aid them along the spiritual path.



# POLYTECHNIC CHRISTIAN FELLOWSHIP

The Polytechnic Christian Fellowship (in short PCF) would like to extend a heartiest warm welcome to all Freshmen for the session '75/'76. We congratulate you all on your success.

The PCF was formed in 1959 by a group of Poly Christian students who felt the need of christian fellowship and witness in the campus. They believed that obedience to our Lord Jesus christ lies in total submission to the teachings of his word (the bible) This fellowship was then registered under the Registrar of Societies on the 2nd June, 1964 as a non-profit religious society and then later affiliated to the Fellowship of Evangelical Students (F.E.S)

The finances of PCF are met by gifts, pledges and prayer support of christian (both within and without Polytechnic) who desire to share the work of ministering to students in the Polytechnic.

The aims of PCF are as follows:-

- a) To present christ to fellow students of the college as the only answer to their spiritual needs.
- b) To promote spiritual growth among christians in the college.
- c) To maintain a witness for christ in the college.

Weekly fellowship, prayer and lunch time meetings were held to meet the needs of both christian and non-christians. These meetings were held on individual campus basis. However there were

programme and meetings planned for all the three campuses combined. For example, annual camps and retreats were held for a time of sharing, spiritual upliftment, tracing, fellowship and relaxing. The Lord has blessed these meetings, camps and retreats.

In 1973, contact groups were initiated in the various campuses. These groups were formed on individual class basis where christians from a particular class met weekly for Bible studies discussions and sharing. Interested non-christians were also invited to join our contact group meetings to learn more about christianity and also to exchange their ideas, views and thoughts. Through contact groups, we hope to consolidate and stimulate a closer and more personal relationship between one another within the group. Discussion and sharing were freely and openly done because of the nature of the small size of the groups.

During the christmas season, carolling was organised for a time of fellowship and remembrance of the birth of Christ. Carollers enjoyed themselves tremendously.

The PCF had organised mission tours for the past 3 years. These tours were held during the long vacation. The main aim of this Mission Tour is to expose PCF'ers to missionary life and also to establish a mission-mindedness within the spiritual realm of PCF'ers. The first mission tour was to Thailand and Indonesia. For the second one, we ventured to the East and West coast of West Malaysia and also to the Riau Islands (off Indonesia). At Riau Islands, the mission delegates built a church. This year (ie the 3rd mission tour) 11 mission

delegates continued last year's work at the Riau Islands. They built 2 parsonages (homes for pastors), a well and a church extension.

The PCF wish you all a pleasant, enjoyable and rewarding stay in the Polytechnic. We look forward to meet you.

---

## THE CATHOLIC STUDENTS SOCIETY

The Society was formed in 1970 with the expressed aim of creating an atmosphere conducive to the living of our faith as Catholics in the Singapore Polytechnic.

The extent to which this has been achieved will remain always a rich source of inspiration to the Society. We thank those who have contributed to that and we invite them to remain with us as associate members.

We are not however blest with a rich past, apparently because of a breakdown of the society during the 73/74 session. We can only speculate and analyse the causes for this breakdown, but we shall not make any conclusions by justic to the 73/74 Committee. We shall simply state the facts made by Mr. John Fo, a member of the 73/74 committee. He attributed the breakdown to the following reasons:

- 1) lack of commitment of the committee members.
- 2) poor response of the members.

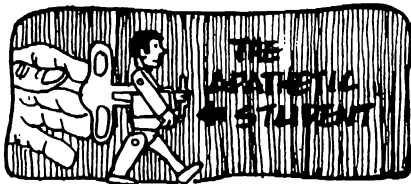
The second reason however necessary falls back on the first. So in effect the breakdown was due to the ineffectiveness of the 73/74 Committee which was resolved in 1973.

In October last year a revival effort was started by Brother Moses and this accelerated until the culmination of our reward -- the formation of the 5th Executive Committee of the Society (to serve for the current session 1974/75) at the Society's AGM held on the 11th of January 1975.

During this revival tide we were glad to witness the solidarity of our members at Christmas Party. A survey was also carried out by the revival group on the Catholics in the Singapore Polytechnic. It showed we had about a hundred Catholics in the Polytechnic and a record of the particulars of these Catholics is now kept in the Society's files. This render a great service in enabling us to communicate with our members, even during the holidays. We would like at this juncture to thank all those who had help in the Revival group and we wish to extend our membership to them with a deep sense of gratitude and pride.

In keeping with the tend, we slowed down our activities during the third term. However we had been able to meet again, during the term on the 25th of January, for a session with Father Patrick Goh- our potential chaplin. This was well attended and proved to be very enriching.

A two days camp will be organised during the holidays for all members and potential members of the society. Activities will be organised at the spiritual, recreational and working level.



# THE STUDENTS' CHRISTIAN MOVEMENT

A movement means that things should not be left as they are; we want to work progressively for a society and a world where people can live in peace, justice and brotherhood. The S.C.M. is therefore a movement for change.

We are a Christian movement because we want to continue the work that Jesus Christ had started for the betterment of people and society. Each one of us has to find out the significance of Jesus in our lives today.

We are also students, and as students we have a particular responsibility in harnessing our intellectual ability and energy to work towards peace, justice and brotherhood, so as to prepare ourselves for a deeper commitment for change. Students form an important part of society but are not above it.

## History of the S.C.M.

The S.C.M. has since been in Singapore for 35 years. It was formed in 1939 by a group of dedicated students. Singapore S.C.M. has found membership among University, Polytechnic and secondary school students and even among some lecturers. At present we have the Singapore University S.C.M., the Polytechnic S.C.M. and the Friends of the S.C.M. - all of which has representatives forming the National S.C.M. body.

## Aims of the S.C.M.

- 1) to help students discover themselves in their educational environment and in society,
- 2) To strive with others towards the creation of a new society and a new man,

3) And in this process, to discover God in human history and existence and to bear witness to Jesus as the Lord of history.

## World Affiliation of S.C.M.

The S.C.M. of Singapore is a member of the World Student Christian Federation (WSCF) which is an assembly of S.C.M.s and similar movements. The component members meet every four years to determine WSCF policies and elect office-bearers. There are over 80 S.C.M.s all over the world, from the regions of Asia, Middle East, Africa, Europe, North America and Latin America.

The headquarters of the WSCF is in Geneva where a secretary-general and some staff coordinate the activities of the six regions.

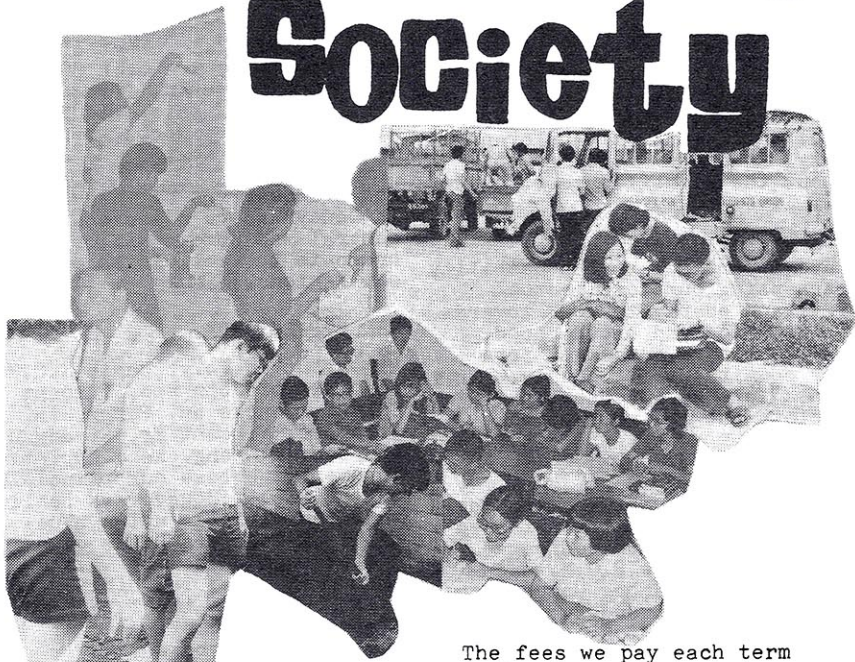
## Our Aspirations

The group of Polytechnic S.C.M. consists of John Foo, Vincent D Silva, Francis Wu, Peter Sim, Eric Lee, Vincent Er, Freddy Ng and Tan Ang Meng. As a Christian movement, we base our principle on the Bible. However we realize that the Bible is not a blueprint of Christian aims or a recipe book on how to live a Christian life. The Bible deals only with the life of people in relation to God and it can be a mere record of meanings and interpretations of historical events. To use the Bible as sole guiding handbook will not be very helpful in discovering the truth and to bring about a better world to live in and a more meaningful life. The true guideline to follow is what Christ himself had applied --- the recognition of human needs as the motivating force for taking actions.



...the world is ours, the nation is  
ours, society is ours...

# Students for Society



Students are part and parcel of society. They can assume no other status or any other form of existence.

## OUR OBLIGATIONS TO SOCIETY - the role of the student

How often have we thought about how our stay in this prestigious higher institute of learning is made possible?

The fees we pay each term is barely sufficient to facilitate the expensive education we receive. The large bulk of the money used for our education is subsidised by the tax-payers.

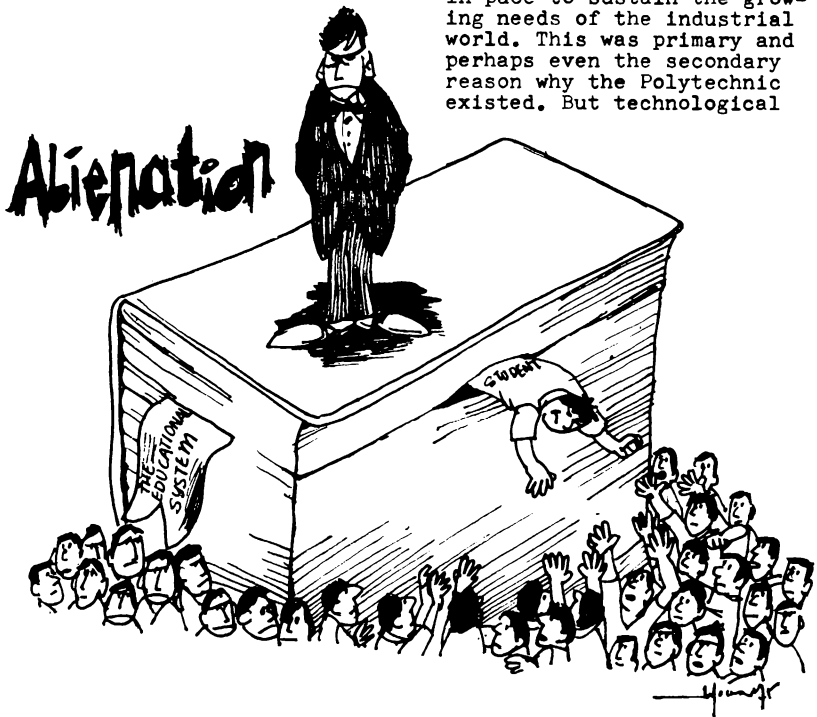
The educational system have done much to subvert our realisation of this simple fact. But the fact still remains. Our status and the priveleges we enjoy as students are at the great

expense of others. This and our moral obligations as human beings mean that whatever knowledge or skills we have acquired must later be used for the benefit of the people. For us to only use it for our own selfish ends is both demoralising and irresponsible. We have always been told that the only reason for our stay in Poly is to 'learn how to make a living'- the words ironically spoken by our former Principal himself. This filthy and self-centred concept which still prevails among our administrators is dangerous and subversive to the interest of the people and should not be cultivated in our minds.

### ALIENATION - the communications barrier created.

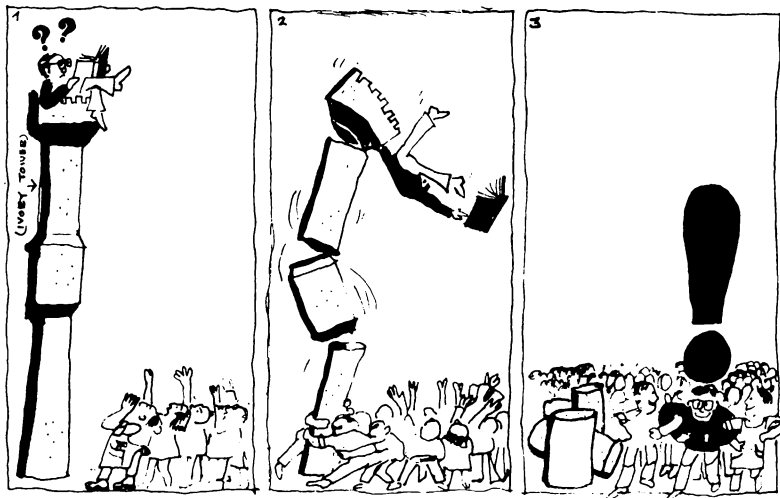
How much are we aware of our true role as social beings? Does our education, which is solely confined within the four walls of the class-rooms equip us in every way so that we can be beneficial to the people? How true is the assertion that education imbues in the student a sense of responsibility to the nation, helping us to understand and solve the problems besetting the less fortunate in society?

As technology leaps forward, so must education keep in pace to sustain the growing needs of the industrial world. This was primary and perhaps even the secondary reason why the Polytechnic existed. But technological



advance cannot be at the expense of humanity. Education in the true sense will be awkwardly distorted and rendered meaningless if it is nothing more than answering the call for more skilled technicians. Moreover, it is only in the superficial sense that our educational system in this capitalist state is geared towards the advancement of all humanity. It should not be a surprise if a deeper look into the whole schooling process will

sense of responsibility. Rather, we are deliberately misled into looking at life from a selfish and distorted view. Right from the beginning, education to us, as emphasized by our educationalists, is merely how to make a living and virtually nothing more than that. Social prestige and wealth have always been the only determinants to a successful stay in the Polytechnic and it matters little if a student had in the process built up



tell us that it is chiefly designed as an instrument of the rich few, the capitalists and the industrialists as a means to their own selfish ends.

It is therefore unimportant in the eyes of these elites who are also behind the policy-makers to ensure that students would through this so-called educational process be instilled with a moral discipline and a true

a strong personality and a conscience for his less fortunate fellow beings in society.

The rat race is hence created in Poly and students are forced into participation. With such close competition in the educational process, our capacity to communicate, to understand each other is dulled and belittled. The students are therefore made more self-centred in the

WE MUST ADMIT THAT IT (the Students' Union) IS A VERY RARE ORGAN LEFT IN SINGAPORE WHICH CAN STILL EXPRESS INDEPENDENT, CRITICAL IDEAS AND CAN STILL ATTEMPT TO ORGANIZE PUBLIC SENTIMENTS WHICH EXPRESS THE ASPIRATIONS OF THE MAJORITY WHO HAVE NO CHANNEL TO REGISTER THEIR RESENTMENT. OTHER EFFECTIVE ORGANISATIONS ARE EITHER BANNED AND NON-EXISTENT OR EFFECTIVELY CRIPPLED WITH THEIR LEADERS THROWN INTO PRISON. .... KNOWING THE SOCIAL VALUE OF OUR STUDENTS' UNION, WE MUST WORK HARDER TO ORGANIZE THE UNION TO SERVE THE PEOPLE WHENEVER POSSIBLE ...

...WE ARE ALL IN THE UNIVERSITY AT THE EXPENSE OF MANY OTHERS. REMEMBER OUR RESPONSIBILITY TO SOCIETY, OUR RESPONSIBILITY TO JUSTICE, EQUALITY AND FREEDOM."

- TAN WAH PIOW

Alienation must be eliminated if we are to free ourselves from any further subversion of our conscience and moral responsibility. Yes, the bridge must once again be erected and students must regain their true identity as an integral part of society.

#### STUDENTS AS A SOCIAL UNIT- what we can do

We must come to the realisation of the fact that our admittance into this college is not only based upon our academic merits. Our education is heavily made up from public funds and we are therefore obligated to serve the people. It is our responsibility and obligations to articulate the aspirations of the vast majority of the population.

Students as a social unit has certain unique characteristics, different from other sectors of society. They are unlike the working class, who by virtue of their marital status have more economic burdens to shoulder than students. In short, we are in a better position and are more free to act out to stand against social injustice. As students, we also have a better access to certain knowledge and technology normally not known to the public. They can be properly utilized to solve and evaluate social problems. Hence, students can act as a catalyst for social change or as a voice for the people to express their grievances to the authorities.

process, giving him a more individualist outlook.

Conditioned to uphold such false values, students have always looked upon themselves as an elitist social class; they were to be tomorrow's life-blood and nation-builders. This had bred alienation of students from the common masses. The students are to make up a special social strata towering high above all the common people sitting at the base. The present educational system therefore merely reinforces the status quo, creating classes and social divisions.

# The anti-BUS-fare hike Campaign

In early February, 1974, the four Students' Unions, SPSU, USSU, NATCSU and NUSU came together for a common cause - to protest against the IOcts bus-fare hike.

## The IOcts. INCREASE - WHY IT WAS UNJUSTIFIED

The government's reasons for supporting this fare-hike was fallacious. They claimed that the S.B.S. (Singapore Bus Service) was running at a loss and that it was impossible for the government to nationalise the bus service, therefore rendering the bus-fare hike unavoidable.

The primary reasons for the loss were the increase of NWC-recommended wages and diesel cost increase and purportedly, the total increase had come up to the gigantic figure of \$17.5 million a year. At first glance, one can tell that this sum, as officially stated by the Ministry of Communications was absurdly false. Our initial research work had helped us to arrive at only a figure of \$5.32 million (\$1.68 million due to diesel cost increase plus \$ 3.64 million due to wage increase following NWC recommendations). The question of how the additional \$12.2 million was spent is still left unanswered. Even if the total loss amount to such an enormous amount, could not the government, whose main responsibility is to serve



A trishaw-man joins in petition.



Loading of leaflets at USSU

the majority, make loans to the bus company to alleviate their financial problems? One must bear in mind that we are talking about an essential service and that the fact still remains that the government was then financially strong enough to spend lavishly on such luxurious projects such as the Sentosa golf courses, cable cars and colour TV which benefit only the rich minority. Another disturbing question was why was the government so reluctant to take over the SBS? Their reasons for not doing so because of the lack of expertise can be seen as a feeble excuse, for had they not successfully organised the management and other expertise to run SIA, the SCP (State and City Planning) and the HDB, which had won worldwide reputation? The government certainly had not lived up to their reputation of an impressively high efficiency by deeming it impossible for them to operate the bus-service. A more likely reason seems to be that the government is not too willing to run a probably non-profitable business.

## THE IMPLICATIONS OF THE HIKE

So it was decided that the people must shoulder the full burden of paying for the capital infrastructure of a private company. This IOct's increase would mean an extra expenditure of \$6 - \$12 per month for a commuter and this is not a small sum to pay for those in the lower income whose meagre salary ranges from \$150-\$300 a month and whose only means of travelling is by bus. It was thus no exaggeration when the bus-fare hike was denounced as unjustified and even a clear-cut case of black-mail of the people.

The IOct's increase could be seen as extremely unhealthy to the spiralling inflationary trend. Many could predict that it will have an inevitable repercussive effects on the prices of other basic commodities. This will obviously add on to the hardships of the poor people again.

## THE STUDENTS' ACTIONS

Given these few disturbing facts, few can remain quiet over this issue. The four Students' Union, voicing out the people's grievances, protested against the hike and requested the government to postpone the implementation of the fare increase until a more viable solution is worked out. A Press statement was released, urging the government to conduct an exhaustive public inquiry and to consider alternative solutions to the problem.



A petition against the hike was then launched as the first part of the campaign. A total of 10,000 signatures by students and members of the public was collected and much effort was made to publicise on the campaign since the mass media was most uncooperative.

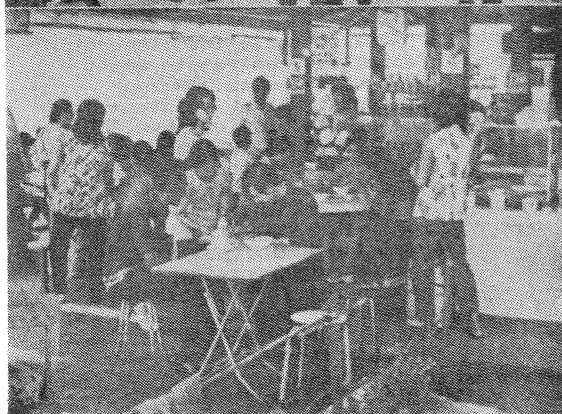
The intensive petitioning campaign held was however futile. The student delegation in hope of presenting the petition to the Minister for Communications, Mr. Yong Nyuk Lin was turned away. It was certainly

regrettable that Mr. Yong had tried to avoid the students despite the urgency and importance of the whole matter. Mr. Yong being an elected member of Parliament owes a duty to the public to make himself available to receive the views of the public. His snobbish and nonchalant attitude had certainly contradicted his sense of responsibility to the people.

A government statement released later indicated that the student delegation will only be



The campaign extends to the public. Students rallied for support at Empress Place.



The public responds. Support from the people was encouraging and overwhelming. The petition was then 10,000 strong.

granted an audience if they can submit a constructive proposal for an alternative solution to the problem of bus transport. The students do not favour such a pre-condition to be laid out since it only serves to discourage people from expressing their views to the authorities. Furthermore it is largely the government's duty to come up with the new proposal, not the people's. But the odds were made against the students. Realizing that they had no other choice and that the whole matter was extremely vital, they conceded.

The four Students' Union was then prepared to undertake a study on the transport problem so that they can present a more viable alternative to the government to work on. In this connection, the Students' Anti-Bus -fare hike Research Committee was formed and the students set forth to do their bit of homework.

Ironically, the research

committee lacked the co-operation from the authorities. The Ministry of Communications, the ROV and the SBS had all blatantly rejected the students' request for some pertinent information, data and statistics without which no research work can proceed. Furthermore the students pleas for the implementation of the hike to be postponed to a later date until the new proposal was worked out was completely ignored.

### THE CAMPAIGN - SUCCESS OR FAILURE ?

The campaign launched can be interpreted as a dismal failure since the bus-fare was increased as planned and the petitions collected were all unheeded. But all that was done was not in vain.

Students have too long been living in their ivory towers. The Anti-Bus Fare





Hike Campaign had brought this image tumbling down. The spontaneity of students in supporting this campaign and the high initiative they took in extending the petition to the public proved that they are not socially apathetic as they have so often been accused of being.

The students had also come face to face with social reality. They learnt of the cold alienation between the rulers and the ruled. Right from the beginning of the campaign when Mr. Yong evaded the student representatives at the City-Hall to the time when the petitions collected and the request for co-operation was flatly ignored the government had clearly shown that all opposition was uninvited and that they were reluctant to know of the people's aspirations. The mistrust in the sincerity of the students' actions was also shown by the number of plainclothesmen swarming around the Poly Union House.

The response from the public had been surprisingly good. Throughout the campaign, telephone calls and letters were received from the members of the public and each one had reiterated their support for the cause and their indignation over the unjustifiable hike. Many discussed with us the additional problems caused and others gave their suggestions to us on what we should do. Some reminded us that unity was imperative and that we must not falter due to repression from the authorities. The public response had been most encouraging.

This was the first time the students movement in Singapore had undertaken a public welfare issue. It was also the first time that the four prominent Students'

Unions in this nation had come together to work on a common problem. Student Solidarity had never manifested itself more proudly before.

But the authorities were just as quick to be aware of the potency of student unity. With the collaboration of the mass media, the government had tried to disillusion students by faking reports on a split in the unity of the four Unions. The President of the Nanyang University Students' Union had been subjected to much intimidation and threats until he was pressurized to sign a drafted statement together with the NATCSU President to 'clarify' over some so-called misunderstanding which were actually purposely caused. The joint 'clarification' publicised widely the following day gave an adverse impression of disunity and much confusion was caused over the students' stand. This was one move to weaken the students' efforts. Other student leaders had also been called up and 'interviewed' by Internal Security Department (I.S.D.) agents and threats were made on their academic career and even on the members of their families. The official press statement issued by the students have never once been reported without any distortion or misintepretation by the Press.





## COME IN AWARENESS

You who have come  
In quest of knowledge --  
Come with open minds  
Ready to explore new ideas  
To nurture your talents, if they  
Be for the betterment of mankind

Come with humility and gratitude  
For your coming has been possible  
At the expense of many others  
Know that you have a responsibility  
Not to betray that trust that  
Others have placed in you

The world out there needs you  
Let your coming be  
To make you a better person  
For the role destined for you  
And should you find  
Your ideals shattered  
The rosy picture you painted  
Smeared --  
Do not be disillusioned  
But from this dilemma  
Gain greater strength and wisdom  
To pursue your goals.

- Norsiah A Rahman

### DEFINITION

*Starving a child is Violence*  
*Depressing a culture is Violence*  
*Neglecting school children is Violence*  
*Punishing a mother and her family is Violence*  
*Discrimination against a working man is Violence*  
*Ghetto housing is Violence*  
*Ignoring medical needs is Violence*  
*Contempt for poverty is Violence*  
**AND THE LACK OF WILL POWER TO HELP  
HUMANITY IS A SICK AND SINISTER FORM  
OF VIOLENCE.**

- Ms. Coreta King Jr.

# JOINT SURVEY ON THE AGED

- WHAT IT MEANS TO  
BE OLD IN SINGAPORE



In July, 1974, the Welfare committees of SPSU and USSU held a survey on old folks in Singapore. The aim of the survey is three-fold :-

- 1) To understand the present living conditions of the old folks in the aged homes and Chinatown and the problems faced by them.
- 2) to inculcate in the students a sense of social awareness through an exhibition and
- 3) to foster closer links between students of both institutions.

## The Conditions of the HOMES

During the survey a total of 108 males and 185 females from 8 welfare homes and Chinatown Kongsu Homes were interviewed. Questions asked during the interview were on families background, the past and present economic conditions, their health, the staff, food and recreation in the homes. Apart from interviewing the aged, the officials in homes were also interviewed.

From the survey, it was found that relationship of staff and inmates are generally good. However most of the homes are understaffed (average inmates/

staff ratio is about 1:15 and as such inmates lack individual attention. The shortage of staff is chiefly due to the heavy burden of work coupled with unattractive salaries, inconvenience in transport (most homes are from town or the main roads). The welfare of the inmates are then neglected as a result.

The old folks in welfare homes are living in a state of depression - they are lonely and neglected which gives them a very negative outlook of life. Little has been initiated to uplift their broken spirit in life and although recreation facilities such as TV, radio or rediffusion are provided in certain homes the aged spend most of their time sitting idly, doing nothing. Such motivation must be provided for them to perform creative work like gardening, basketry or needlework.

We must also bear in mind that the aged are also part of the society. The old folks feel neglected and unwanted for they are so segregated from society. Welfare homes should not be located at rural areas; the old should be housed within the housing estates. Viewing the inadequate health services in

the homes, it is concluded that the setting up of a special institution with sufficient medical facilities and staff to attend to the disabled and chronically sick old folks is highly necessary.

Environmental conditions in the homes are generally bad. A few hundred are of concrete building with modern facilities but most are mere dilapidated wooden buildings with poor sanitation and ventilation. Common complaints are that the homes are hot in the day, cold in the night and no privacy. The congested living conditions are also not conducive to those who are sick.

Most of the inmates interviewed came from the lower-income group and are very financially dependent. 80% of the old folks have no savings. Their sources in income are from public assistance which is only \$28 per month, relatives and friends, income from light work and pension and CPF. The money is all given to the homes for food and other household necessities with only a meagre sum of \$2 per month allowed to each old folk for their personal expenditure. This is obviously insufficient.

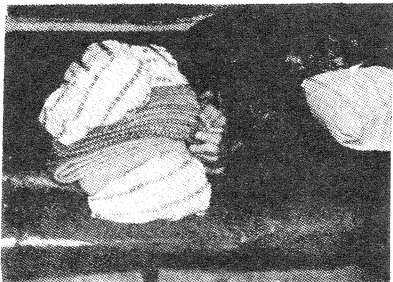
Food is one of the most important aspect of the life of the aged staying in welfare homes and for aging people whose body resistances are low, food containing the right kind of vitamins is vital. The food usually served are, for breakfast - biscuits, plain bread and plain water or coffee (pending on different homes), for lunch - rice, vegetable, fish (ikan kuning), plain soup and occasionally meat, for tea - coffee and biscuits and for dinner- the food is similar to that of lunch. Not only is the amount of food served insufficient, the quality must be improved.



**They worked hard in adverse conditions - contributing their share towards modernisation...**



**...only to spend their remaining years in welfare homes, where living conditions are bad...**



**...has society forgotten them?**

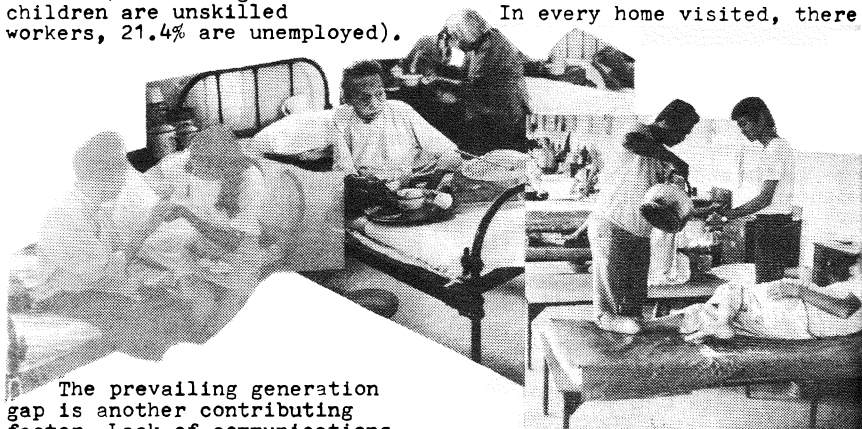
## WHAT BROUGHT THE AGE TO WELFARE HOMES?

The circumstances leading to aged landing in Homes are manifold and very complex, one of which is due to the financial situations of the aged's children. Most of the aged's children belong to the lower income group (from the survey, the statistics are 64.3% of the aged's children are unskilled workers, 21.4% are unemployed).

From the survey, it was found that 33.7% of the inmates are single with no dependents. Most of them were immigrants who had come to this country in search of work and they had worked very hard. These people who had contributed much in building up modern Singapore are now old, disable or in poor health as a result of industrial accidents or through strenuous work.

### CONCLUSION

In every home visited, there



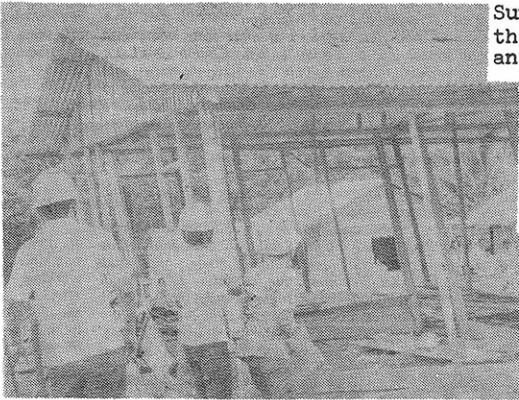
The prevailing generation gap is another contributing factor. Lack of communications due to the different set of values different generations have and to the fact that each generation is too pre-occupied with his or her own activities. The older generation has also to resort to welfare homes because of the limited space in HDB flats where their adult children are residing in.

Many of the inmates in homes are of poor health which has been contracted as a result of hard-work in their younger days. Further to that, shortage of money had prevented many from seeking medical care, when they become old and sick, family members who are so busy working for a living are not available to care for them. The old folks are therefore sent to the homes.

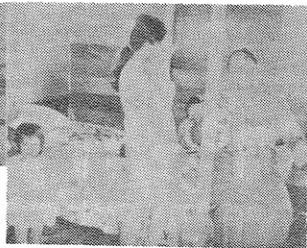
is a long waiting list of applicants showing that more and more aged are opting for the aged home. It has been indicated that the steps taken by the Social Welfare Department to improve or expand these homes are totally inadequate.

The government should be urged to devote more attention to these aged. One way they can help is by allowing free accommodation to the old in the one-room flats since most of them are in financial difficulties. Social welfare aid to the poor old folks should also be increased.

Old age is a question that concerns us all - today's young will be the aged tomorrow. The public should also work to tackle these social problems.

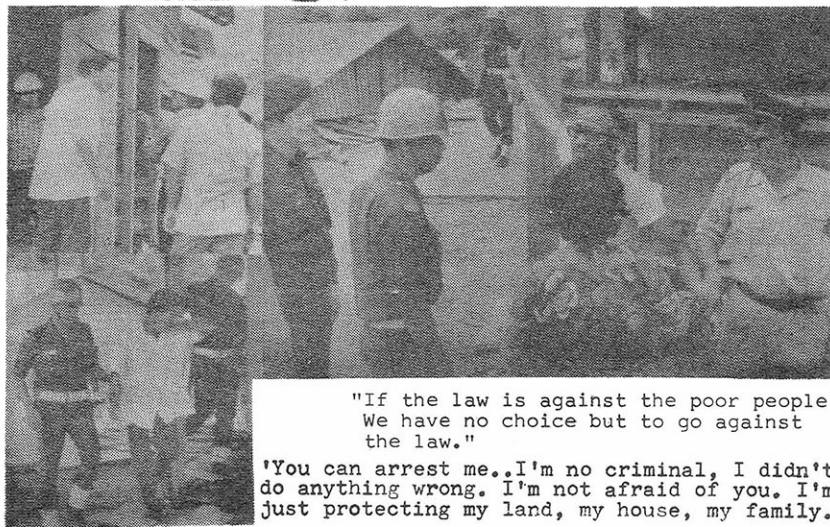


Sunday morning, 15th Sept.,  
the demolition squad came  
and destroyed everything.

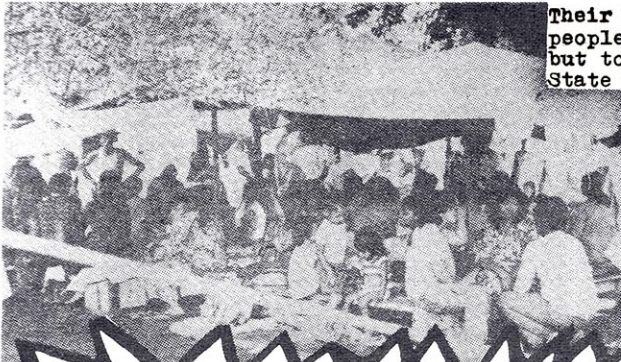


'Have mercy on us.  
This is our home -  
we've nowhere else  
to go to.'

# The J.B. SQUATTERS ISSUE









Their homes gone, these people has no choice but to camp outside the State Secretariat



**We want JUSTICE!**  
**We want LAND!**



USSU and SPSU presented open letter to M'sian High Commissioner demanding justice for the 'squatters'. The High Commissioner told students representatives that it is not the duty of the government to provide home for every person. The squatters must go through the proper channels.



In the many rural communities of Malaysia, an enormous numbers of farmers are either dispossessed or lack of land. Where are the extensive stretch of land of fifty thousand acres then? In actual fact, there are two million acres of the most fertile land held in the hands of the capitalistic and imperialistic monopolists of which the biggest is England. For instance, 76% of the most important economic commodity of Malaysia, rubber, is controlled by British monopolists. In Malaysia, they either invest to set up their own factories, or with compradores in different kind of ventures. Thus large pieces of land in the cities and sub-urban areas are required. It is so that the authorities adopt barbaric actions in evicting city handed over to local and foreign capitalists.

### THE TRUE STORY OF THE SQUATTERS ISSUE

In early August last year it was heard that some two or three hundred families had built their home in Tasek Utara (in the vicinity of the J.B. Broadcast station) without obstruction. The news reached some of the evicted rural dwellers who were now in the city and were eager for land. Once the news spread, many land needy people flocked there. They approached some political personnels for assistance in the matter of settling there. It was then during election time when there was a candidate of the Barisan National who gave a verbal promise that he would consider the problem if he were elected. The land office had also made investigation without objection. Furthermore, house numbers were issued to the residents at \$5/- each. Consequently, the residents pawned or sold their valuables, borrowed from all sources, and together with their life savings to finance the building of the

houses. This was how the villages of 'Barisan National' and 'Datuk Hussein Onn' came about. The residents here comprised mainly of Malays, followed by Chinese and Indians.

On 8th September, two weeks after the election, unexpectedly the officials from the land office led the demolition squad to pull down houses that were still under construction or unguarded. The order was given that all residents must evacuate within 7 days. The residents made attempts to look for help from the land office, the Mentri Besar, the Sultan and the political personnel (now a member of the paliament) who made his promise earlier. However, this proved fruitless with hypocritical replies of 'most sincere sympathies' and 'inability to act'.

On the 13th September, UMSU (University of Malaya Students' Union) received a telegram from the residents informing the Union of their failure to negotiate with their Mentri Besar. Hence, UMSU decided to take up this issue whereby they actively supported, financially and morally.

On 15th September, a group of demolishers together with a large number of policemen and federal reserve unit together with the riot squad arrived at the site to 'carry out their duty'. The residents knelt and pleaded but were only treated with a cold heart. It was obvious that the houses built out of a month's labour and financed by life savings would be destroyed. In view of this, the residents had to demolish their own homes so that the timber would not be



confiscated and destroyed. On the 16th September, the residents marched to the front of the city hall where they erected tents and demanded for a meeting with the Menteri Besar for a reasonable settlement.

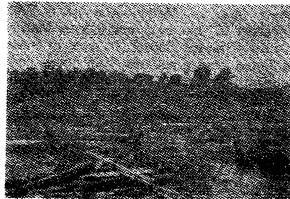
The appeal to the authorities by UMSU to give land to the resident was ignored. Over 3 thousand students demonstrated outside the campus along the Federal Highway on the 23rd September. They were obstructed by the Federal Reserve Unit men and were dispersed by tear bombs leading to a traffic jam. On the 22nd Sept. at 5a.m. a group of riot squad invaded the tents temporarily pitched by the squatters and arrested 48 people, including old men, women and children. 5 students of the University of Malaya and 2 students, Choo Foo Yong and Chia Yong Tai of the University of Singapore were too arrested with them.

The ruling clique, in trying to curb the students' concern for the people, suspended UMSU. A 'National Executive Council' (NEC) headed by the reactionary students seized power from the legal Temporary Executive Committee (TEC) which consists of popularly elected student leaders. Immediately the NEC denounced the Union's support for the squatters and received high praise from the government and the local press.

In this issue, students of the University of Singapore and the Singapore Polytechnic were also involved. Some students, in their personal capacity, went there to look into the matter and offered assistance on humanitarian grounds. In the campus, students were appealed to donate for the relief of the residents. A fund raising



campaign organised by SPSU in all three campuses was fairly successful. A total of \$1,749.00 was collected from students and staff and subsequently sent across the cause-way. On the 18th September, about seventy students from the two institutions forwarded an appeal to the Malaysian High Commission for a reasonable reply. Some time later, the USSU opened a general meeting to decide on whether it was justified for the Union to help the J.B. Squatters. Finally support was shown with majority voting in favour of the Union's stand. At the time, students were urged to be concerned and to provide assistance to the needy and less fortunate masses.



-Once there was a village

# BANGLA desH FLOOD RELIEF CAMPAIGN

Since August 1974, various Asian countries including the Philippines, Bangladesh, India and Burma were affected by severe floods. Bangladesh, as a result of its unfavourable geographical environment was most badly affected and over 30 million on its total population of 70 million were forced to evacuate. Many countries of the world initiated relief campaign in an attempt to rescue those who were struggling on the verge of hunger.

The University of Singapore Students' Union and the Polytechnic Students' Union jointly launched a Bangladesh flood relief campaign bearing the principle of taking concern in the plight of the less fortunate people and strongly uphold the motto of social justice. Besides setting up collection centres at different schools, students were mobilised to Queens Town, Toa Payoh and Kallang Basin and other housing estates to collect old clothings and cash. With the dedication of the students and the support of the masses, the vast flood relief campaign ended successfully, we collected

42 lorry loads of clothings and \$26,000/- in cash within a short span of 2-3 weeks.

Door to door collection for donations



# BANGLA DESH HIT BY FLOODS

-30 MILLION  
AFFECTED

THE NEWS CAME  
-SPREADING DISASTROUS  
-FOR THE HOUSING  
-ESTATES OF  
-BANGLA DESH

STUDENT LEADERS FROM UOSU AND SPSU CAME TOGETHER TO DISCUSS OVER THE PROBLEM - THE DECISION TO LAUNCH A BANGLA DESH FLOOD RELIEF CAMPAIGN WAS THEN ARRIVED AT - PLANS WERE MADE AND STUDENTS MOBILISED.



AT POU, THE CAMPAIGN WAS PUBLICISED TO THE STUDENTS. ALTHOUGH THE CAMPAIGN FALLS DURING THE TERMINAL VACATIONS AND MOST STUDENTS COULD NOT BE INFORMED OVER 200 STUDENTS RESPONDED TO SPSU'S CALL.

IMMEDIATELY, THROUGHOUT THE WEEK THAT FOLLOWED, STUDENTS WERE ALL OVER THE ISLAND, AT THE HOUSING ESTATES OF QUEENSTOWN TO A PARCH, TANGONG PUA, MCLARRISON, ETC. TO COLLECT DONATIONS IN BOTH CASH AND KIND.



RESPONSE FROM THE PUBLIC WAS OVERWHELMING. THEY CAME IN GREAT NUMBERS - OFFERING WHATEVER THEY CAN.

THE ONLY MEANS TO PUBLICISE THE CAMPAIGN AND TO INFORM THE RESIDENTS OF THE STUDENTS' ARRIVAL IS THE P.A. SYSTEM WHICH WAS SET UP AT EACH COLLECTION CENTRE.



... THE STUDENTS HAD NO PERMIT TO MAKE SUCH ANNOUNCEMENTS IN THE PUBLIC. THE POLICE STOPPED US ON SEVERAL OCCASIONS.

WHERE IS YOUR PERMIT?



... WHY NO PERMIT? IT WAS NOT BECAUSE WE HAD OVERLOOKED THIS POINT. ATTEMPTS TO OBTAIN A PERMIT HAD BEEN GREATLY FRUSTRATED BY THE MANU BUREAUCRATIC CHARACTERISTICS WE HAD TO GO THROUGH.... NEVERTHELESS, THE STUDENTS WENT HEAD-ON WITH THE CAMPAIGN.



AFTER THE WEEK-LONG CAMPAIGN \$26,000, TOGETHER WITH OVER 40 TRUCK LOADS OF CLOTHING AND FOOD WAS COLLECTED. THE MONEY WAS THEN CONVERTED TO MEDICINE.

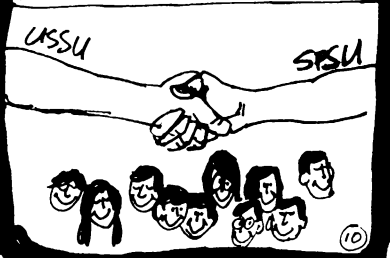
MEDICINE TO ASSISTED OF PEOPLE IN POLICE OFFICE



THE CAMPAIGN WAS A TREMENDOUS SUCCESS - BRINGING ABOUT GREATER SOCIAL AWARENESS AMONG STUDENTS AND A STRONGER UNITY BETWEEN USSU AND SPSU.

USSU

SPSU



The success of the campaign was making the result of the experience gained from the bus-fare hike campaign. In the process of preparation as much as possible was done to provide students and the public an understanding of the campaign's meaning and aims. Opportunities for contact between the students and the people of different social classes especially those from the lower-income group.

During the campaign, the government not only did not provide any help but tried in various ways to hinder students' efforts. For example, students were not allowed to use

the loud speakers for announcing purposes. The press was also very reluctant to publicise this campaign and nothing was mentioned about the over-whelming response by the public. One may ask, " why as the press so tongue-tight over this issue?" The campaign was an activity that involved thousands of people in Singapore, the young and old alike, people from all walks of life, Is the press not keen on the idea of building a truly united and responsive society or is it helping to build a society in which people alienates from one another, ignorant of each other's problems.

publicity on the campaign  
 was of utmost importance  
 - yet the Press hardly  
 mentioned a word about it. WHY?

THE PRESS RELEASE  
 THAT WAS NEVER  
 RELEASED :-



P R E S S   R E L E A S E  
 =====  
UNIVERSITY OF SINGAPORE STUDENTS' UNION  
SINGAPORE POLYTECHNIC STUDENTS' UNION

BANGLADESH FLOOD RELIEF CAMPAIGN

More than half of the country of Bangladesh is flooded and more than half of the population are starving, suffering and dying.

We need to help our 40 million Bangladesh brothers by going out to collect donation from the public. Donation can be in the form of cash or blankets, clothes and canned food.

The collection will be done in a One-Week-Campaign (26th August - 31st August, 1974). The Day-Area schedule is as follows:

DAY	TIME	AREA	CENTRES
MONDAY 26/8/74	Morning	Nil	Community Centre
	Afternoon	KALLANG BASIN	
TUESDAY 27/8/74	Morning	TOA PAYOH	Kong Chian Theatre Shell Station near Blk 202 Lorong 3
	Afternoon	TOA PAYOH NORTH	
THURSDAY 29/8/74	Morning	QUEENSTOWN	Japanese Garden & Church at Commonwealth Drive Catholic Church & Queerway
	Afternoon	QUEENSTOWN	
FRIDAY 30/8/74	Morning	OLD KALLANG AIRPORT	New Market Market
	Afternoon	TANJONG RHU	
SATURDAY 31/8/74	Morning	SENETTE ESTATE	Community Centre & Jln Wangi Nil
	Afternoon	Nil	

We appeal to the people in the above listed housing estates to donate generously when the students go on their house-to-house rounds. The public can also donate direct to the Council of Social Service, Penang Lane or U.S.S.U., S.P.S.U. Union House.

We are now mobilising about a few hundred students to carry out this 'One-Week Campaign'. We ask all students to give the time and energy to help their 40 million brothers in Bangladesh.

Signed:

Juliet Chin,  
 President,  
 U.S.S.U.

Woon Kok Meng,  
 President,  
 S.P.S.U.

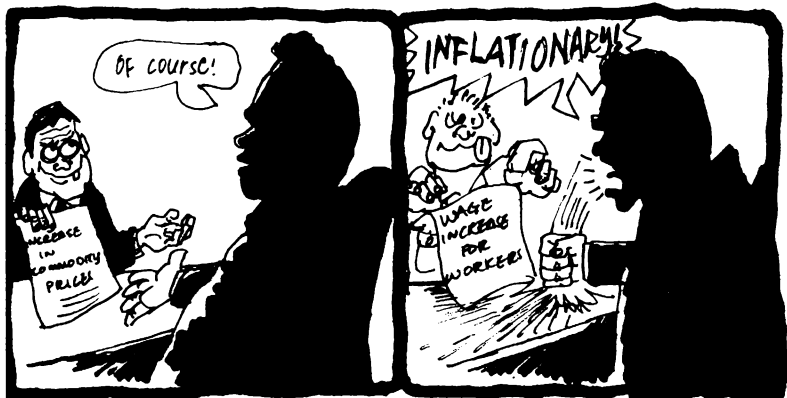
4th September, 1974.

# retrenchment research centre

Since last February to January this year, more than 15,000 workers had been retrenched. According to the Ministry's estimation the figure of unemployment will increase to over 80,000 by mid 1975 which is roughly 9% of the working population. This phenomenon is an indication of economic predicament causing great hardship to the working people.

Moreover, initial research work has unrooted some injustice being inflicted on the retrenched workers. The malpractices of those multi-national corporations responsible has manifested itself in several forms. Workers have been laid off at the last moment without prior

notice. A case in point is the retrenchment of workers in Aircro who were fired at 4a.m. in the morning after completion of their night shift. National Semiconductors retrenched a large bulk of their work force on the pretext of world slump in electronic gadgets. However, the truth was that their five-year tax holiday had expired and characteristic of the M.N.C.s National Semiconductors cut down production to search for greener pastures in other countries, thereby forsaking our workers. American Marine, a boat-building factory, laid off workers for two weeks without the assurance of any compensations. In many other cases, workers were sacked without compensations, benefits or prior notice. The whole affair had threw light on the vile manner with which M.N.C.s operate. Our workers were treated as mere productive



units and no thought is given over their problems and welfare. It seems that they were just to exist to be exploited and to serve the whims and fancies of the Multi-Nationals who dominate over our economy, enslaving our young nation and her people.

We are at present living in an era of recession, rampant inflation and unemployment. This global predicament, it seemed is inevitable as far as the capitalistic structure is concerned. How secure is our economy, being an inseparable part of the deteriorating Western capitalist machinery? Is it not time for us to strive for economic self-determination and come to the realisation that survival is impossible for we will be the first to fall if the Western economy which is at present in such a vulnerable position suffers a setback? This should be the time when we evaluate and survey our economic landscape with greater clarity and sincerity.

SPSU and USSU then set up the Retrenchment Research Centre (R.R.C.) with a four-pronged activities:-

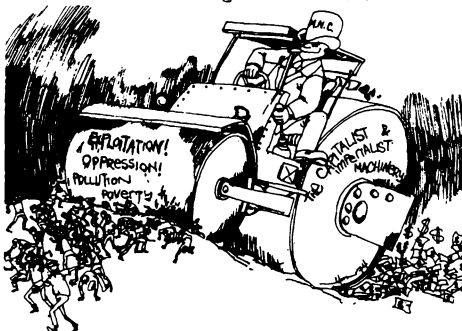
- a) to gather information about retrenchment
- b) to suggest some relevant alternatives to the authority concerned.
- c) to provide an immediate relief to the retrenched workers.
- d) to suggest future action for the Students' Union to follow.

R.R.C. immediately gained support from the workers. In the campus, some workers had been invited to discuss with the students and to attend meetings. Mass surveys were organised to enable the student to understand workers' lives as well as fostering student-worker relationship. A hand-book containing information on workers' rights, labour laws and the true nature of M.N.C.s was also planned to be published. Its aim is to enable the public to know about the true story about retrenchment and to assist the workers to



learn to fight for retrenchment benefits through legal means.

Progress of R.R.C. was seriously hindered and much obstacles had been thrown along the way. Firstly, the Chairman of the R.R.C. who is also the President of USSU, Tan Wah Piow together with another two industrial workers Ng Wah Ling and Yap Kim Hong were arrested and charged in court



because of their involvement in the American Marine lay-off case. They were all charged for unlawful assembly, criminal trespassing and rioting only after a week R.R.C. was formed. Though the arrest was clearly planned to impede the progress of R.R.C. and to suppress further student involvement, the great majority of the students still continue with the work. In fact, the arrest stirred several students from apathy to the realisation of the true situation in society. The response worried the authorities, and in order to further cripple the operation of R.R.C., they inhumanely arrested and deported five student leaders of USSU, driving another into hiding. (They are:- Hon. Gen. Secretary, Juliet Chin, Social and Cultural Secretary, Tsui Hon Kwong, Vice-President, Bong Hon Min, Councillors, Chia Yong Tai, Choo Foo Yong and member Chuah Chong Lai).

The response to this drastic barbaric action was a series of mass rallies held at the University of Singapore campus as well as the three campuses of the Polytechnic. The overwhelming turn-out at each rally, demonstrated the students' indignation over the unjustified acts. The students had strongly the authorities actions and demanded the reinstatement of those six innocent students. USSU also officially called on a two days boycott of lectures in protest of this action.

The students' cause, their struggle for justice was totally distorted by the Press which published only a disproportionate view on the students' stand.

It is undisputable that many had awakened to the social realities in that turbulent period. Though much injustice had been done and still left uncorrected, the events that had taken place indicated a very promising tomorrow.

## TIGHTENING THE BELT

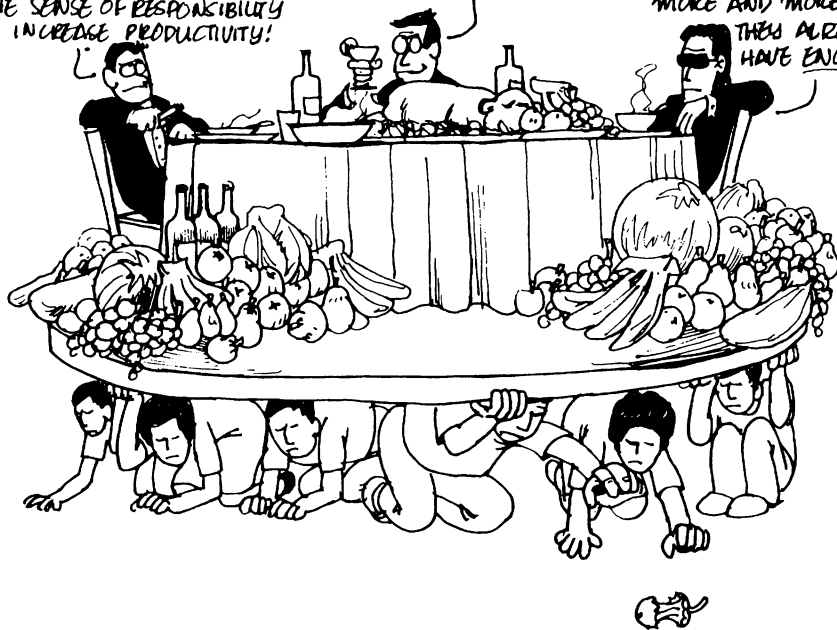




WORKERS TODAY ARE  
TERRIBLY SPOILT—  
ALL THOSE THINGS THEY  
HAD DEMANDED FOR—  
HIGHER WAGES, BETTER  
WORKING CONDITIONS, ETC.  
ETC.! WHAT THEY LACK IS  
THE SENSE OF RESPONSIBILITY  
TO INCREASE PRODUCTIVITY!

YES! IT'S JUST TERRIBLE!  
AND WHO CAN THEY  
BLAME FOR INFLATION?  
ONLY THEMSELVES!  
IF ONLY THEY WOULD  
WORK HARDER—THEN  
ALL WOULD BE FINE!

I WOULD SUGGEST  
THAT THEY TIGHTEN  
UP THEIR BELTS!  
THESE ARE HARD TIMES  
AND THEY SHOULD FACE  
IT! NO ONE SHOULD  
RUN AROUND ASKING FOR  
MORE AND MORE WHEN  
THEY ALREADY  
HAVE ENOUGH!



# UNITED WE STAND

The above activities sparked off much controversy within the campuses. Although the prime moving factor behind such activities was concern for the people, opinions of the student population at sometime or other showed reservations over the Union's involvement. There were conflicts over certain issues. In the anti-bus fare hike for example, students expressed that since we were unable to bring down the fare, we had been unsuccessful and as such had wasted our time and effort. The J.B. Tasek Utara issue was hotly debated, mainly centred around the point that we are crossing boundaries and violating another country's sovereignty. Such reactions are not abnormal. We have been subjected to a one track educational system all along that is designed to turn us out into no more than digits to serve certain 'commercial' needs. We are not used to discuss on socio-economic problems of society. In short our educational system does not help to being socially orientated individuals out of us. Therefore, viewed in this context, the debates were healthy exercises whereby we educated ourselves and learn to understand each others' feelings more. It was through all these debates that we narrowed down differences and hence could be able in future to undertake activities as a more cohesive unit. We have learnt that deep understanding into the context of any problems is necessary, before action is done, and through understanding and by uniting together, we shall stand.

## POLITICAL?

We have been accused of being political, turning the Students' Union into a political machinery for use outside. Even students themselves feel that the Unions were stepping into the threshold of politics. With prominent personnels making such statements in the press, more people will be misled onto believing that students were really using campuses for political activities of benefit to others (Who? Who knows?) What is being political? Students and Unions are not political parties and therefore are not challenging or threatening the existence of any political parties. But what we were concerned about are issues that concern the social well-being of the majority of the people in our society. Do we want to carve our own future? We are humans and we strive for betterment in our lives. As such we have to react to various developments in our society. And for this, we are accused of being political.

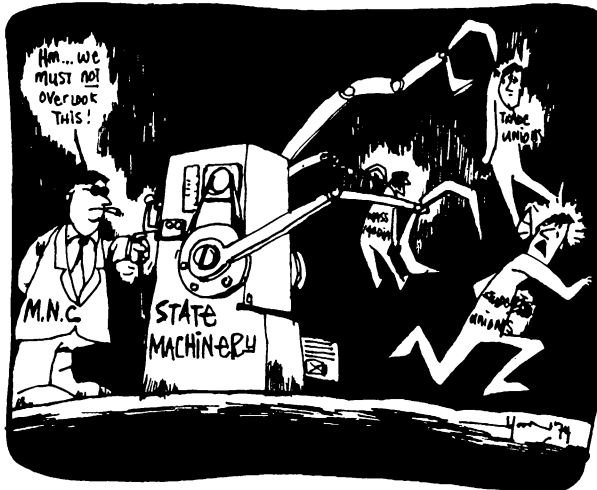
## TO BE OR NOT TO BE

So now we come to the question of 'to be involved or not to be? We have to evaluate our role in society, the role we play in building a closely-knited community. Is this our job? Or do we leave every-thing to politicians (national leaders?) to decide and for our part sit back and wait to follow without question? We want to be actively involved in decision-making too.

## WHAT DOES THE FUTURE HOLD FOR US

Who can foretell the future? In championing the cause of the majority of oppressed people, we can expect the reactionary power clique to suppress us. So we play the tune and sing praises for the power clique. But does our conscience allow us to do that? Or should we be neutral and apathetic, as though we do not live in this community? By all indications, anyone, students or workers alike, who tries to voice their protest against social injustices can expect to be 'put in the right place'. They are ready for us. Even the press is doing us harm by distorting our motives. All that we can depend on is manpower - people! The people must be kept informed of our motives so that we can be prepared to work

together. Personal sacrifice is inevitable but we can never afford to sacrifice our organization. That is we cannot let them ban our Union. So we need to review constantly the developments and make wise decisions before stepping forward and act. And together we stand, divided we fall.



# THE TRIAL

The trial of Tan Wah Piow, student leader, Ng Wah Ling and Yap Kim Hong, shipyard workers, has great importance for the people of Singapore. Probably the longest trial in the history of Singapore, it has uncovered fundamental motivations and mechanisms underlying the structure of Singapore society.

From court evidence we have gained rare insight into the workings of the 'authorities'. We have heard about the manner in which Phay Yew Kok, Gen. Secretary of PIEU, and other PIEU officials treated workers. Wah Piow described the way he was interrogated in a 'very cold room' by the police. We have heard also about ISD agents keeping close surveillance on students and workers.

The exploitation of retrenched workers by their factory managements was brought out eg. 5-minutes' notice, no retrenchment benefits, payment in vouchers.

---

## What happened on 30 October?

Tan Wah Piow, Ng Wah Ling and Yap Kim Hong are being tried under a charge of 'rioting' inside the PIEU premises on 30th October 1974 at about 11.15 am. The PIEU premises are on the ground floor of a block of flats in Jurong. Near the PIEU front door is a flowerbed. In front of this block is a field. In front of the field is a dual carriageway road. The Bank of America is across the road opposite the PIEU.

On 30th October morning about 100 AM workers turned up at the field to hear what Phay, PIEU Gen. Secretary had to report about their lay-off.

This was a follow-up of a meeting between Phay and the workers held on 23rd October, at which all 3 'accused' spoke up. Phay never turned up on 30th.

### PROSECUTION

The prosecution's testimony totally conflicts with the evidence of the defence.

Lawrence Kwek, PIEU Asst. Gen. Sec. said he opened the door of the PIEU Gen. Sec's office for "self-protection" after the glass on the door broke. He said he put up a "struggle"

The testimony of the trade union officials is in total conflict with the evidence of the defence witnesses (see pp 2,3). While the trade union officials described how the 3 'accused' 'rioted' inside the PIEU premises, workers, students and journalist testified that Tan, Ng and Yap were outside at time of the 'riot'. Two workers inside the premises also testified that it was Lawrence Kwek, Asst. Gen. Secretary of PIEU, and PIEU officials who caused the damage.

As the trial continued, persecution of defence witnesses became increasingly blatant (p.4). Factory managements dismissed 3 witnesses after their testimony and 3 prospective witnesses after their names were mentioned in court. Deportations of witnesses and prospective witnesses were carried out even before the trial began.

Rarely, if ever, have student and workers been jointly prosecuted in a trial of this dimension. From this trial we have become increasingly aware of the great value of student-worker unity. The trial is now coming to an end with the verdict of the judge expected on Friday 21 Feb or Monday 24 Feb. At this crucial time we must turn up in full strength in the First District Court and we must, with greater strength than ever, demand JUSTICE NOW for Tan Wah Piow, Ng Wah Ling and Yap Kim Hong.

with Wah Piow and Botak behind whom was Ng Wah Ling. He alleged both ran into the hall. The "rioters" allegedly ran out of the back door, opened by Yap Kim Hong. Robert Ng, said he saw Wah Piow breaking the glass on a swing-door.

### DEFENCE

The evidence is that at about 11.15 after Kwek refused to come out to talk to the workers, the workers on the field gathered at the PIEU front door. The door was slammed shut. The sound of the breaking of glass and the overturning of furniture was heard. The workers protested and retreated back into the field. Shortly after, the door opened and two female workers came out of the premises.

These two workers testified that while inside the premises they saw Kwek breaking the glass on a door and they saw Kwek and PIEU officials overturning furniture.

Witnesses testified that during the commotion and after it Ng Wah Ling and Yap Kim Hong were on the field. They also saw Tan Wah Piow across the road opposite the field standing in front of the Bank of America immediately before and immediately after the commotion.

# PROSECUTION

LAWRENCE KWEEK Assistant General Secretary of PIEU.

After 11 am I heard knockings on the wooden part of the door of the General Secretary's room. Through the frosted glass on the door, I could make out the shadows of 5 persons. Suddenly the glass pane was broken.

I open the door straight away and saw the first accused and another person. 2nd accused was behind them. Each of the two was armed with a stick. I was frightened and caught hold of a struggle. I remember I gave a kick on the first accused's stomach. ....  
... They ran out of the rear door held open by 3rd accused. I went to telephone the police."

ROBERT NG Industrial Relations Officer of PIEU.

"I heard noise of breaking glass from the office and heard Kwek shouting, "Stop them! Don't let them run." I went in but before reaching the swing-door, 2 persons ran into the hall. Each of them was carrying a stick. My colleagues and I tried to block their way. They ran out of the premises through the back door."

EDWIN NETTO Industrial Relations Officer of PIEU

"I saw a group of persons facing the General Secretary's office. Soon after that I heard the breaking of glass and Kwek opened his door. A struggle took place between Kwek and 2 persons in front of the doorway. ....  
.... Then I heard the sound of breaking glass again. When I looked again I saw that the glass of B department was broken. At that moment, 2 persons with sticks ran past me."

INSPECTOR GILBERT CROSS of Bukit Panjang Police Station

"I did not arrest you there and then because I was not sure of the classification of the offence."

PHHEY YEW KOK Gen. Secretary of PIEU

He said that he instructed a PIEU official to take pictures of the workers at the 23rd Oct. meeting.-to 'cover the events.' He did not think that by stopping the cameraman the meeting would be more meaningful. When shown a picture of the workers apparently hiding their faces from the cameraman with their hands, Phhey said, "Maybe one or two are camera-shy. The others are probably wiping their faces." Asked how he knew that students were at the meeting he said, "They didn't speak like workers. They know a lot of things."

## THE JUDGE

THE JUDGE, T.S. SINNATHURAY

"I am not interested in the truth of the matter as far as you are concerned."  
"Never mind the public interest."  
"Stop talking about a fair trial. If you use that word again I will deal with you for contempt."  
"If you speak once more I will send you down to the lock-up."

"That's something you can tell the next court."

"I won't give an explanation. You want to know, do it in the next court."

"Never mind the fairness of it."  
"I'm watching the time. You have one and a half minutes. What do you elect?....You have 80 seconds left."  
"Not one word from you. keep quiet!"

# DEFENSE



LIEW SIEW YOONG  
ex-worker at American  
Marine.

"After the commotion within the premises the crowd retreated. Everybody was stunned. I retreated too. At that

moment I saw Kim Hong on the field and Wah Piow in front of the Bank of America. I walked over to tell him what happened."



GOH SENG SOON  
ex-worker at Jurong  
Plywood

"I sat with Wah Piow at the Hawkers' Centre for sometime. When I noticed that the crowd had moved to the front I told Wah Piow that

I wanted to go and have a look. He then remarked that he would go to the front of the Bank of America to have a look."

"Immediately after the commotion within the premises, I turned around and jumped down from the flower bed. As I turned around I saw Wah Piow standing in front of the Bank of America. All this time Ng Wah Ling was on my right 2 or 3 persons away. If I stretched my hand I could touch him."



LAI AH CHOON  
ex-worker at Eminent  
Fashions.

"The big-sized man also came into the hall. As soon as he came into the hall he spoke in English, after that,

he punched the glass of the door. He then said, "Overturn the

tables and chairs," and overturned a table. The others followed suit."

"I did not see any of the accused persons inside the premises while I was inside there."



SEOW YUET LENG  
ex-worker of Eminent  
Fashions.

"Ah Choon and I were in the meeting room when we heard footsteps, a little faster than normal. We went

out and into the hall. Lawrence Kwek also came into the hall. He said something in English. He then punched the glass on the door and said, "Overthrow the tables and chairs." After saying, he overturned a table."

"At that time I was very frightened. I heard 'pong' once from inside. I took a step and saw a person kicking the glass inside the office."



CHUAH CHONG LAI  
deported SU student

"Soon after the commotion, I heard the door open. I prepared myself. When the door opened, I saw 2 girls who came out. I took photos of them."

CHOO FOO YONG  
deported SU student



"The commotion took place soon after the door was locked. The workers were all stunned. All this time Wah Ling was standing next to me. I made a remark to him in Mandarin. Then someone said, "Step back, they are trying to frame us up." We stepped back. When I turned around I saw Wah Piow standing across the road in front of the Bank of America."

RAMLEY - technician.

"The blanks in the film is due to developing fault."



JACOB DANIEL,  
Straits Times  
reporter.

"At slamming of the door, I saw a short woman on the flower bed. She was the shortest of the whole lot and was making the most noise during the commotion and also after it."

"When I saw Wah Piow across the road, it was a very short space of time, less than 5 minutes before the 'commotion'."

TAN WAH PIOW, President of the University of Singapore Students' Union.

"From 10 am till past 11am I was all the time in Hawkers' Centre."

"On seeing the crowd move up to the front door of PIEU I moved across the road and walked along the pedestrian path. I stopped in front of the Bank of America (opposite PIEU)."

"Subsequently, I saw this group of workers disintegrate and move backward."

"At no time did I enter any part of the PIEU premises on 30th October."

"I have reasonable apprehension that I am not given a fair trial ...The truth of the matter is that Lawrence Kwek himself smashed a small glass pane and

that he subsequently ordered his men to overturn tables and chairs. The event is created by the PIEU to frame up students and spoke up or were active on 23rd October.

NG WAH LING, ex-worker in American Marine.

"At the time I heard the breaking of glass, I was still standing on the flower bed."

"I did not see Wah Piow the whole of 30th October."

WOU SOO WAH, ex-PIEU branch Committee Vice-Chairman.

"On the day of the incident (30th Oct.) I spoke to Kwek at about 10.10am. After the trial started, Lawrence Kwek told me, "If you want to be my witness, you must say that you went there at 12 something afternoon selling vegetables. You saw no one there and you went home."

"At the 26th October meeting with PIEU AM branch Committee members, They said that the student with a beard comes from a very rich family. And They said, "I will teach him properly that day."

CHU HO LAI, ex-PIEU branch Committee Chairman.

"I saw Mr.Kwek walking along the passageway. Soon after he asked 2 people to 'put' magazines on the floor and to overturn chairs in the 'A' department." "Kwek did most of it. The other 2 assisted him. I cannot recollect who they are. Kwek scattered the magazines and kicked over one chair."

# THREE WHO SPOKE UP...



TAN WAH PIOW, 23, is the President of USSU. After Sec. 4, he worked in a factory and went around HDB flats selling socks. From these experiences he was first exposed to social realities of Singapore. In the University he and his class-mates carried out social surveys in Tuas, Jurong and Malaysia, went on a boycott against academic victimisation and successfully fought for a group of threatened squatters. He first learnt of workers' problems when designing a Workers' Centre for an academic project.

Wah Piow strongly supported USSU's campaigns for social justice. USSU had just began the campaign to help retrenched workers when the authorities arrested him.

Wah Piow's belief is that it is an obligation of a human person to see to it that his fellow brother and sisters are not either exploited, oppressed, intimidated or bullied by those in authority.



YAP KIM HONG, 29, a retrenched worker from American Marine, is from a poor family.

Though small and short (4ft 6in) she has proved her strength and courage by refusing to be bullied by police interrogators and Union 'leaders' like Phey Yew Kok.

She had had bitter experiences of exploitation in this modern 'affluent' state. She knows of girls who are forced to work overtime so as to earn a bit more to supplement their meagre income, resulting in instances of fainting. Her personal contact with the repressive reality has taught her that the destiny of workers can only be decided by workers themselves.



NG WAH LING, 22, a Malaysian, is a retrenched American Marine worker. From young he did heavy odd jobs to support his family. He carried long timber planks on his shoulders by bicycle and was a lorry driver. During his leisure time he visits his fellow workers to discuss and solve problems together. As he is the main bread winner, his family will face livelihood problems if he is convicted. In spite of this, Wah Ling's

determination to fight for the democratic rights of the workers is stronger than ever. That he is accused only strengthens his conviction of the bankruptcy of a system where human beings use others for selfish ends.



The court is the very foundation on which the moral order of our society is built. It is an attack on all of us if any person or persons, for fear of truth being revealed, act to discourage others from coming to testify in court. We condemn all those who work to undermine the base of our society.

Below are the results of acts of vengeance by cowards and deceitful people who obstruct the search for the truth of the case by oppression through misuse of power.

DEFENCE WITNESSES DISMISSED AFTER TESTIFYING:

1) Liew Siew Yoong, American Marine worker. She went to ask the highest person responsible in the company for the reason for her dismissal. She was told that the directive to sack her came from the Pioneer Industries Employees' Union (PIEU) and that if she wanted any more information, she has to go to PIEU or the Ministry of Labour.

2) Lai Ah Choon, worker, Eminent Fashions.

3) Seow Yuet Ling, worker, Eminent Fashions. Temporary branch representative of PIEU.

PROSPECTIVE WITNESSES DISMISSED AFTER NAMED IN COURT:

4) Lee Kuai Lin, worker, Eminent Fashions.

5) Wong Kim Lan, worker, Eminent Fashions.

6) Tan Siew Hong, worker, Eminent Fashions.

PIEU BRANCH COMMITTEE MEMBERS DISMISSED:

Disillusioned with Union for not fulfilling its true purpose and disgusted by acts of certain Union officials, PIEU branch committee members resigned en bloc from the committee on 22nd Jan, 1975. 5 of them were forced

to apply for reinstatement. The others were dismissed 2 days later. They are:

7) Ng Ah Soi, ex-Vice Chairman, AM Branch, PIEU.

8) Woo Sou Hwa

9) Chu Hoo Lai

10) Lee Wan Kiat

11) Tay Teng Nam

WORKERS DEPORTED/FORCED INTO HIDING AFTER 30TH OCTOBER INCIDENT

12) Tan Kok Heng ('Botak'), Forced into hiding. One of those who spoke up on the 30th. Around time of arrest of 3 accused, police issued a press statement with photograph asking for public assistance to locate his whereabouts.

13) Liew Soo Yin

14) Teo Yong Hak

15) Cheong Tze Siong

16) Hun Soon

17) Yong Chong Seng

18) & 19) - Two others

STUDENTS DEPORTED ON EVE OF TRIAL

20) Chuah Chong Lai


21) Choo Foo Yong

22) Chia Yong Tai

23) Bong Hon Min

24) Juliet Chin

Despite such repression, the witnesses have courageously come forward to assist the court, Singaporeans and people the world over in search for the truth of this case. The greater the oppression, the stronger the love of these people to free their oppressed fellowmen from such oppression.



*Follow us to a new life,  
Follow us on our struggle  
Against the old order,  
In the work for a new form of Life,  
For the Freedom and Beauty of Life.*

— M. GORKY —